

LANDSCAPE

porcelain pavers



COBSAUSA

NEW YORK | NEW JERSEY | MIAMI

CROSSCUT CREAM

Landscape



PAVLSCC24



crosscut cream

> 24x24 <

PAVLSCC2448



crosscut cream

> 24x48 <

Landscape

CROSSCUT
WHITE



PAVLSCW2448



crosscut white

› 24x48 ‹

PAVLSCW24



crosscut white

› 24x24 ‹

BLUE
SELECT

Landscape



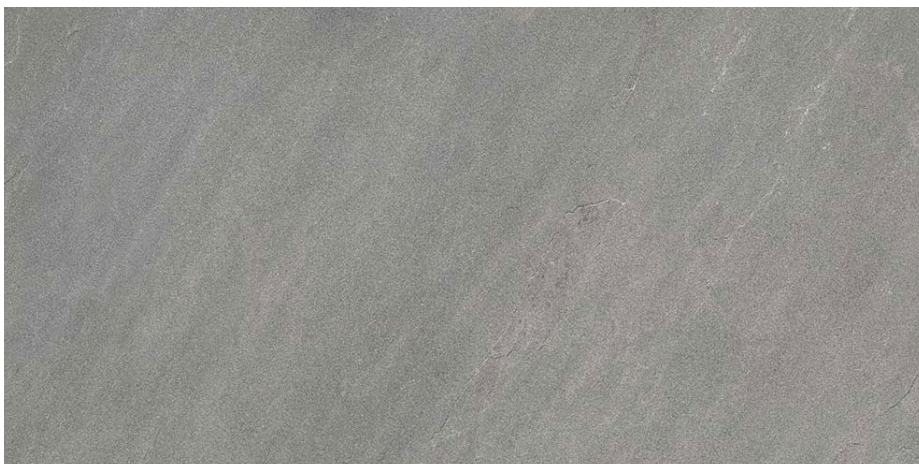
PAVLSBS24



blue select

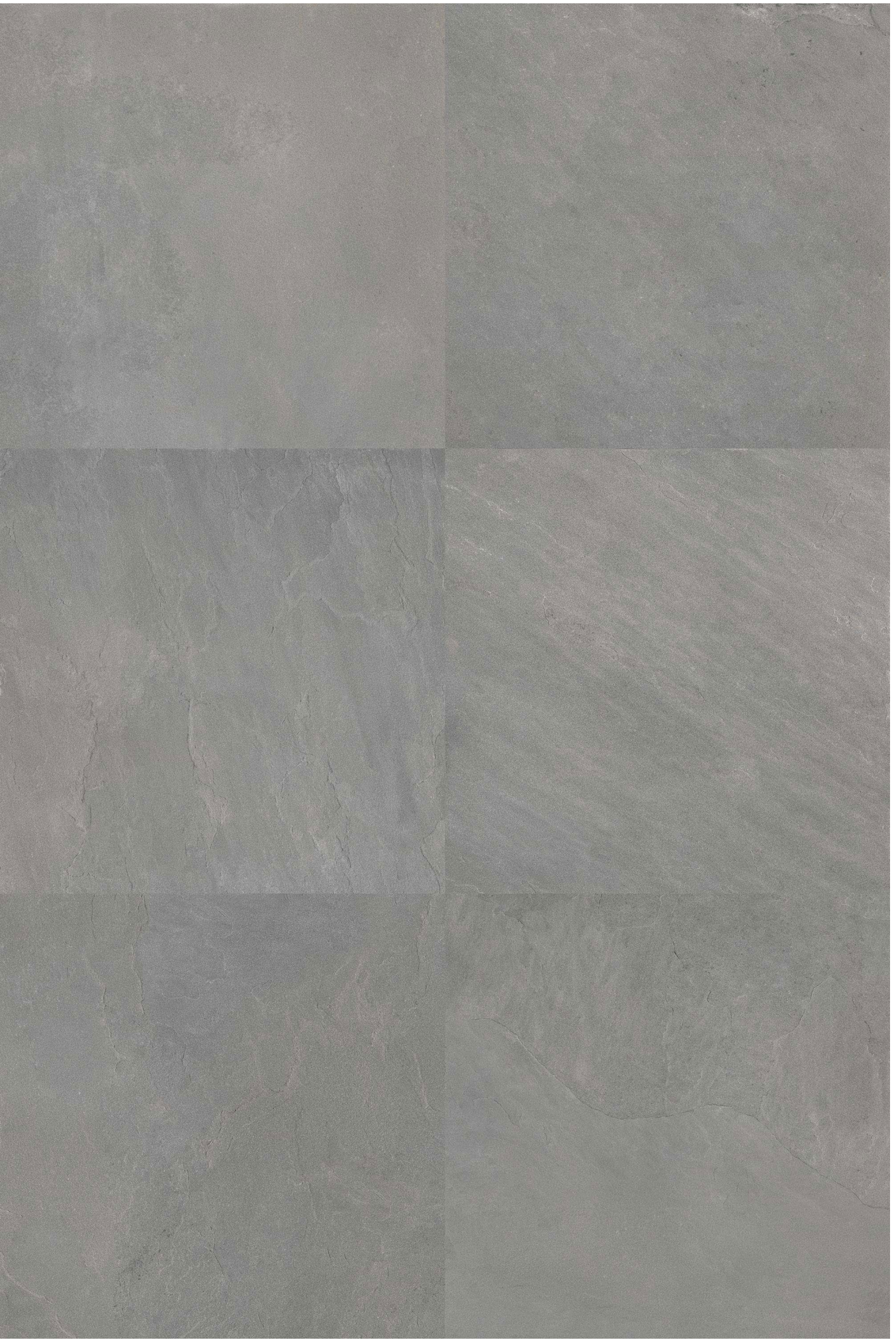
> 24x24 <

PAVLSBS2448



blue select

> 24x48 <





PAVLSFC24



full color

> 24x24 <

PAVLSFC2448



full color

> 24x48 <





PAVLSAB24



african beige

> 24x24 <

PAVLSAB2448



african beige

> 24x48 <



PAVLSLS2448



limestone

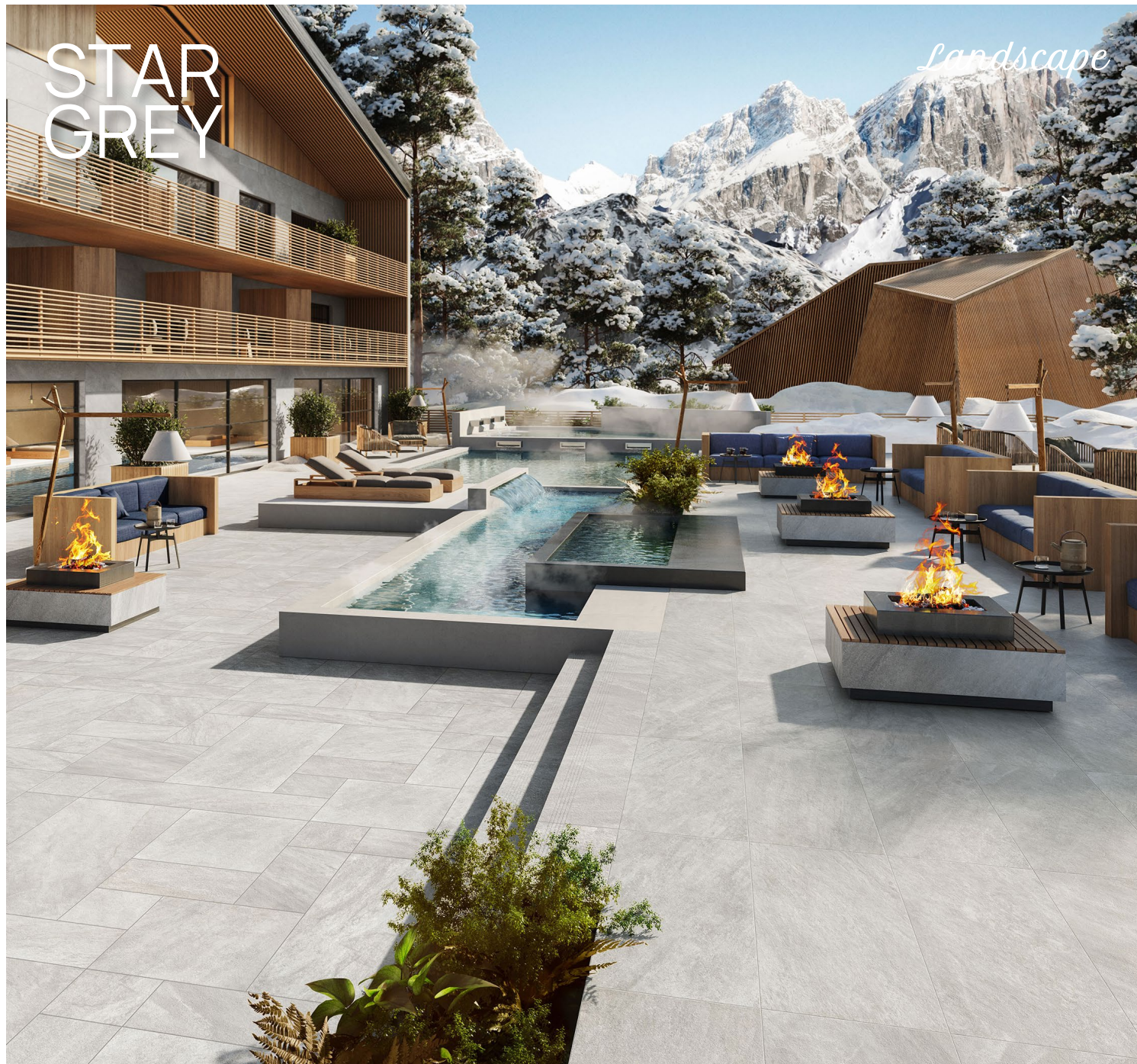
> 24x48 <

PAVLSLS24



limestone

> 24x24 <



STAR
GREY

Landscape

PAVLSSG24



star grey

> 24x24 <

PAVLSSG2448



star grey

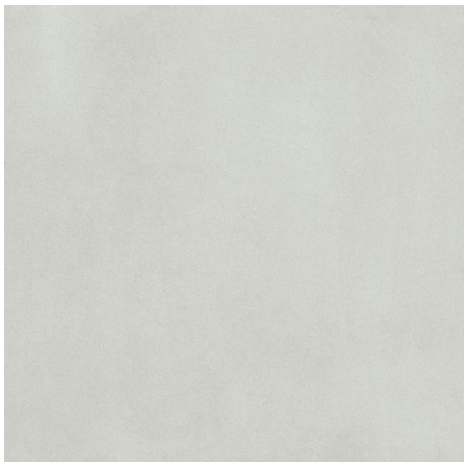
> 24x48 <

Landscape

WHITE
AVENUE



PAVLSWA24



white avenue

> 24x24 <

PAVLSWA2448



white avenue

> 24x48 <



MICHAELANGELO WHITE

Landscape

PAVLSMW24



michaelangelo white > 24x24 <

PAVLSMW2448

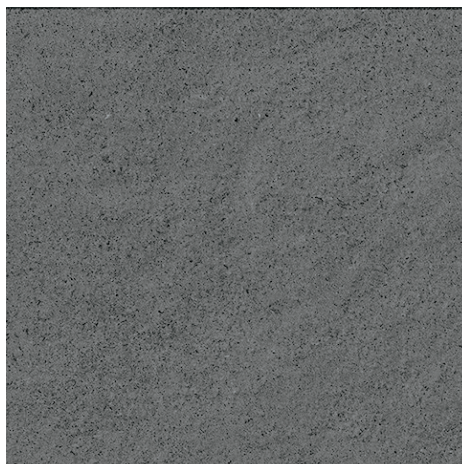


michaelangelo white

> 24x48 <



PAVLSCB24

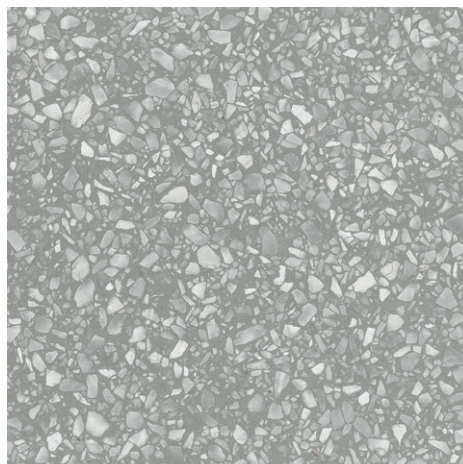


cosmos black

> 24x24 <



PAVLSFG24

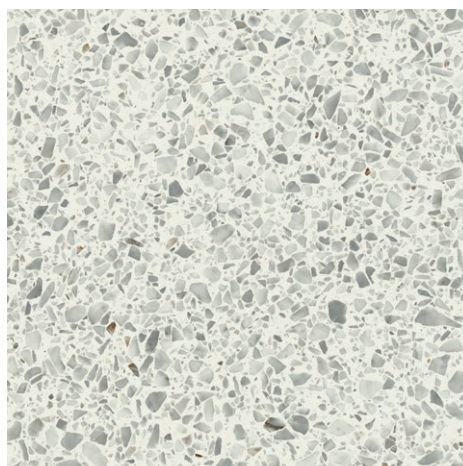


fashion grey

> 24x24 <



PAVLSDW24



diamond white

> 24x24 <

WHY CHOOSE *Landscape* PAVERS?

EASY TO INSTALL

STAIN RESISTANT

Virtually non-porous. Due to the baked on glazing process, nothing can be absorbed, including stains.

RESISTANT TO ACIDS AND CHEMICALS

Made with inert ingredients that do not react or accept acids and/or chemicals.

NO SEALING NEEDED

No sealers are needed because their density doesn't allow anything to stick to it.

EASY TO CLEAN

Mild environmentally friendly detergents can be used when cleaning. Pressure washers up to 1600 PSI may be used without fear of etching or striping.

SCRATCH RESISTANT

Being extremely hard with an equally hard surface makes them virtually scratch proof.

RESISTANT TO THERMAL SHOCK

Baked at temps up to 2300 degrees F cause a very strong molecular bond, and therefore, a dense material.

DRIVE OVER

When properly installed over concrete, they're suitable for light residential vehicular traffic.

EASY TO REPLACE AND REMOVE

When mortared down or installed with adhesive, they can be easily removed and repositioned in a new area.

FROST RESISTANT

Due to their density, frost or freezing temperatures do not affect them.

RESISTANT TO SALTS

Completely unaffected by the use of salts.

\$AVINGS OVER TIME

Low maintenance cost

ANTISLIP

Their structure and texture reduce the risk of slipperiness.

FADE RESISTANT













Their baked on graphics are created using ingredients that are completely unaffected by the sun.

RESISTANT TO MOSS AND MOLDING

So dense that mold and mildew are not able to permanently establish themselves, making removal very easy and simple.

ECO-FRIENDLY

Because they're produced in an environmentally friendly complex following the strictest state and federal regulations, up to 20% recycled content is incorporated.

PHYSICAL PROPERTIES	TEST ASTM	NORTH AMERICAN STANDARD A137.1*	RESULTS
 Water absorption *	C373	≤ 0.5%	COMPLY WITH ANSI A137.1
 DCOF Average dynamic coefficient of friction **	BOT 3000 test	≥ 0.6	≥ 0.6
 Skid Resistance	DIN 51097	-	A+B+C
	DIN 51130		R11
 Resistance to freeze/thaw cycling *	C1026	As reported	RESISTANT
 Resistance to thermal shock	C484	As reported	RESISTANT
 Warpage (edge)	C485	Warpage ± 0.4% or ± 0.05 in	COMPLY WITH ANSI A137.1
 Warpage (diagonal)	C485	Warpage ± 0.4% or ± 0.07 in	COMPLY WITH ANSI A137.1
 Wedging	C502	± 0.25% or ± 0.03 in	COMPLY WITH ANSI A137.1
 Chemical resistance	C650	As reported	UNAFFECTED
 Resistance to stain	C1378	As reported	UNAFFECTED
 Thickness	C499	Range: 0.04 in	COMPLY WITH ANSI A137.1
 Breaking strength	C648	250 lbf or greater	COMPLY WITH ANSI A137.1