

1/4" (6MM)
porcelain slabs



COBSA USA
NEW YORK | NEW JERSEY | MIAMI



LOOKING FOR A SEAMLESS MONOLITHIC AESTHETIC?

6MM HARD ROCK SLABS ARE THE ANSWER!

HRS is a series of 6mm thick porcelain panels, where most sizes are 48"x110" or larger.

DESIGN

These porcelain panels are specifically designed with larger formats in mind, which means the imagery is proportionate to the end panel size. Whether the design is marble, concrete, metal, or solid in effect, all the patterns are created in hi-definition; there is **no pixelation** in the patterning. Additionally, most designs have **many faces**, so distinct repetition is never an issue.

BENEFITS

HRS product benefits including **durability, mold proof, water and moisture proof, UV resistant, heat and frost resistance, stainproof, chemical resistant, scratch and impact resistant, and safe with food** make these thinner larger panels capable of being utilized for more than just floor and wall coverings.





NATURAL

All the substrates used to make porcelain are resin free. Clay, kaolinite, feldspar, silica, and other minerals are all substances found in nature.



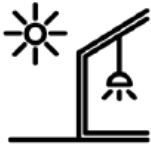
HYGIENIC

Suitable for contact with food due to their almost zero absorption rate. Plus, our HRS are NSF certified.



EASY CLEANING

Most dirt easily removed with hot water and a cloth. Use neutral cleaners when necessary.



INDOOR/OUTDOOR

Because of all the properties of porcelain slabs, they are suitable for any indoor or outdoor kitchen, both residential or commercial.



UV RESISTANT

Pigments in porcelains are permanently stabilized by their baking process and will not change in direct sunlight.



FROST RESISTANT

Porcelains average water absorption is .1%. Impervious to water and freezing, they are perfect for outdoor use!



SCRATCH RESISTANT

Their extremely hard surfaces make them exceptionally resistant to both scratches and deep abrasion.



HEAT RESISTANT

Porcelain surface does not burn or get damaged with hot pots.



CHEMICAL RESISTANT

Can easily be cleaned with hot water and neutral cleaners. Porcelains resist chemicals, acids, bases organic and solvents.



WATERPROOF

With absorption nearly zero, porcelains are both water and liquid resistant.



MOLD PROOF

Due to almost zero absorption, porcelains are mold, mildew, and fungus resistant. There is no surface area to inhibit their spores and allow growth.



STAIN PROOF

Wine, oil, coffee, sauces, lemons, vinegar, and other detergents will not affect these porcelain surfaces.



FIRE PROOF

Porcelains have a non-combustible surface. They will not burn or produce smoke and any toxic fumes.



THERMAL SHOCK PROOF

Due to porcelains high technical performance, these counters can withstand hot and cold temperature fluxations. Hot pots are not a problem, using them outdoors is fine, and ice cannot damage the surface either.

APPLICATIONS

Here are just a few ideas per industry of where these porcelain panels could benefit design.

FOOD INDUSTRY

The non-porous benefits of porcelain counters and backsplashes makes perfect for areas where bacteria free surfaces are needed (ie. food prep and food service areas and/or other areas that come in contact with food. The following solutions of chemicals, in normal working- dilution conditions, will not harm or effect the polished or honed slabs: Chlorine, Iodine and Quaternary Ammonium (quats). Porcelain slabs are NSF approved meaning they conform to the requirements of NSF/ANSI 51 - Food Equipment Materials.



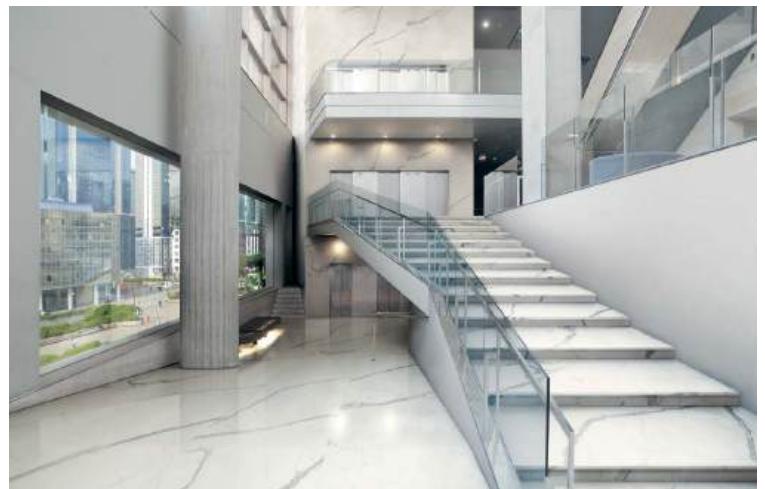
HEALTHCARE INDUSTRY

Their beautiful designs make them visually appealing, warm and inviting offering peaceful surroundings for both visitor and employees alike. Slabs can used for blending and integrating seamless architecture from furniture to wall coverings to counter tops. Large panels are quick and easy installs; there is little downtime for installation. Its flexural properties make panels adaptable for slopes. Their low absorption rate makes them perfect for highly touched areas, countertops, desk tops, furniture coverings. Their low absorption rate also makes them impervious to spore growth; no mold mildew nor fungus have a place to permeate. Their high chemical resistant

makes them resistant to damage from harsh cleaning and sanitizing agents. The following solutions of chemicals, in normal working-dilution conditions, will not harm or effect the polished or honed slabs: Quaternary Ammonium, Hypochlorite, Accelerated Hydrogen Peroxide, Phenolics, and Peracetic Acid.

HOSPITALITY INDUSTRY

In common areas where large open expanses need proportionately larger format patterns, these large panels help unify areas. The UV resistant properties, provides color fast products for bright and direct sunlight areas. There will be no fading of colors.



CORPORATE DESIGN INDUSTRY

The large format will help create a uniform scheme; individual stations can blend with overall areas and give the illusion of bigger more open spaces.



RETAIL INDUSTRY

Besides using them as beautiful backdrops to set off products, you can also use them to create beautiful case goods.

RESIDENTIAL DESIGN

In kitchens, these panels can be used to cover cabinetry (besides countertops and backsplashes) in bathrooms as well as walls and floors providing a seamless look with minimal grout joints. In living rooms and dens, try using the panels to cover your fireplace, gas or natural wood; burning embers will not affect them.



CLASSIC STONE Calacatta Lincoln

48" x 110" x 1/4" | Polished | 5 faces | HRFCSLN1/4L



CLASSIC STONE Calacatta White

48" x 110" x 1/4" | Polished | 5 faces | HRFCSCW1/4L



CLASSIC STONE Calacatta Light

48" x 110" x 1/4" | Polished | 5 faces | HRFCST1/4L



CLASSIC STONE Calacatta Gold

48" x 110" x 1/4" | Polished | 5 faces | HRFCSCG1/4L



CLASSIC STONE Carrara

48" x 110" x 1/4" | Polished | 5 faces | HRFCSCR1/4L



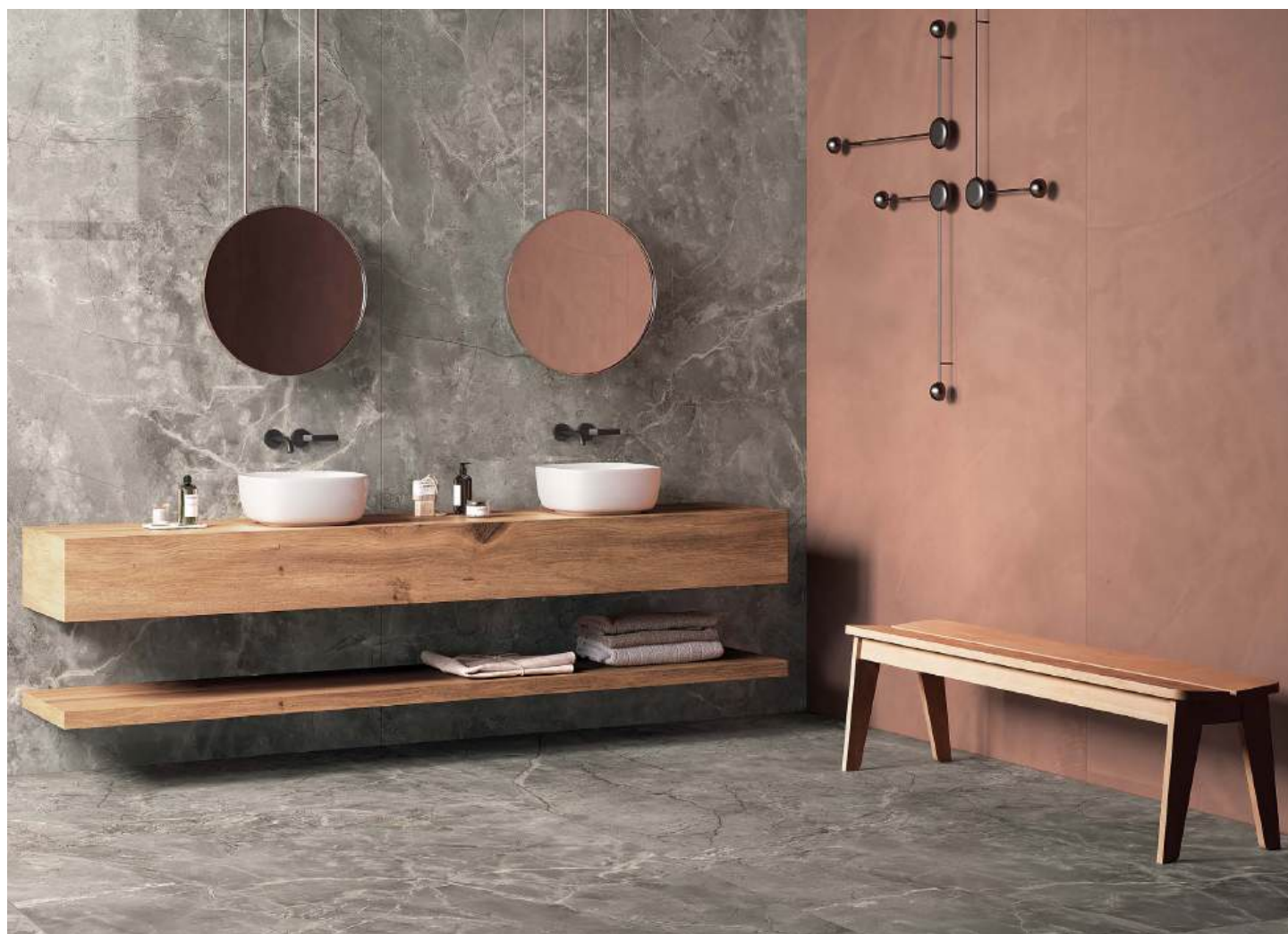
CLASSIC STONE Statuario Extra

48" x 110" x 1/4" | Polished | 5 faces + 2 book-matched faces | HRFCSSST1/4L



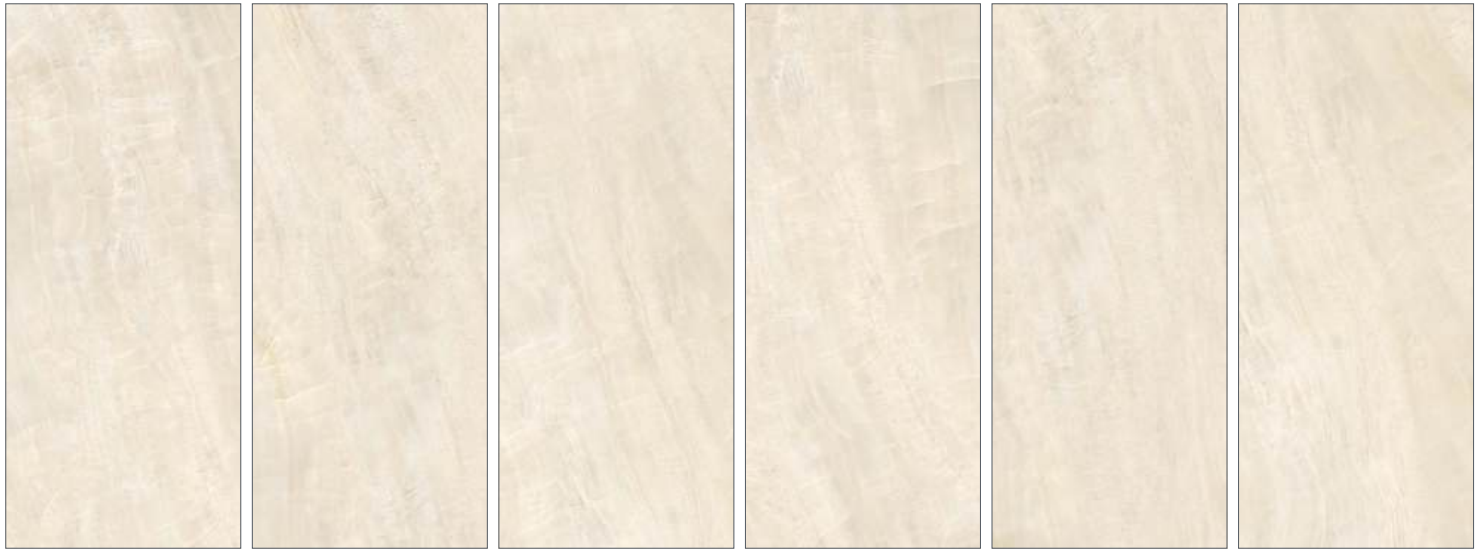
CLASSIC STONE Fiore d' Bosco

48" x 110" x 1/4" | Polished | 5 faces | HRFCSFB1/4L



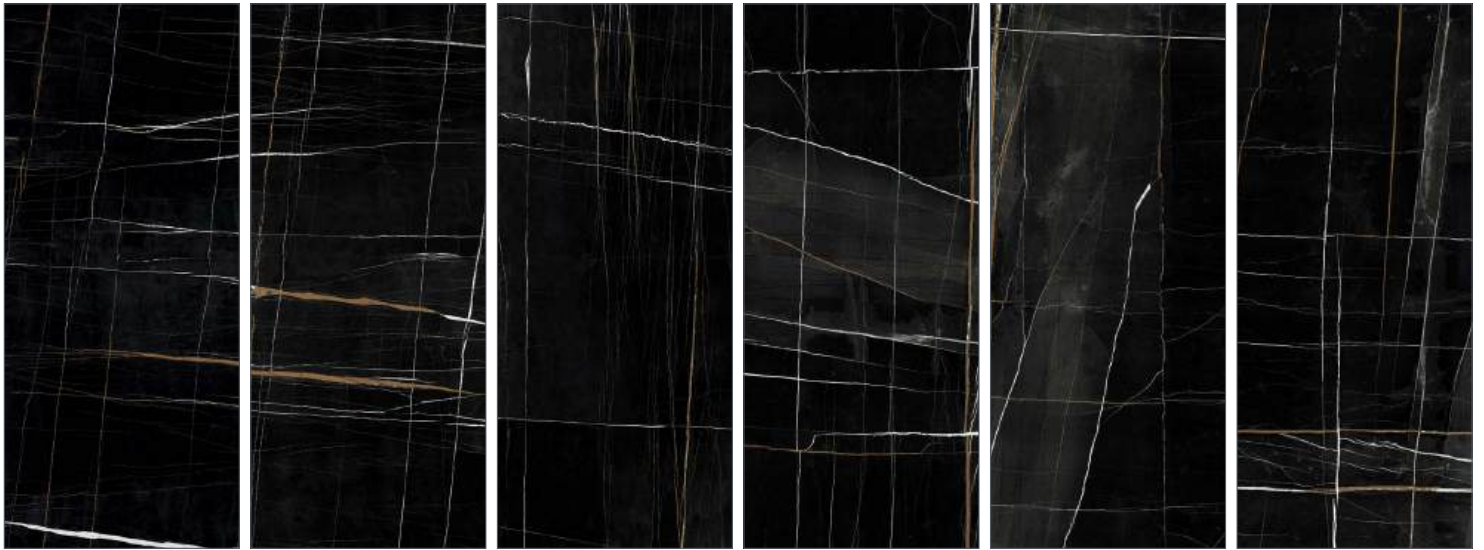
CLASSIC STONE Onice White

48" x 110" x 1/4" | Polished | 6 faces | HRFCSOW1/4L



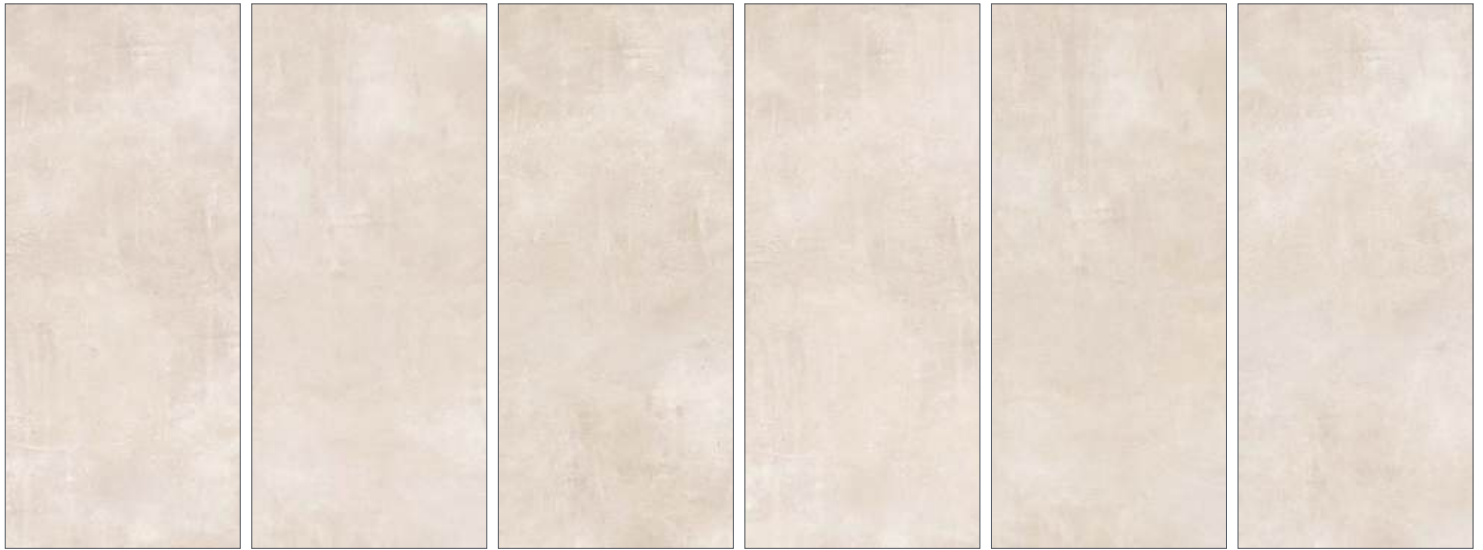
CLASSIC STONE Sahara Noir

48" x 110" x 1/4" | Polished | 6 faces | HRFCSSN1/4L



CLASSIC CONCRETE Jordan

48" x 110" x 1/4" | Matte | 6 faces | HRFCCJO1/4



CLASSIC CONCRETE Hood

48" x 110" x 1 1/4" | Matte | 6 faces | HRFCCCHO1/4



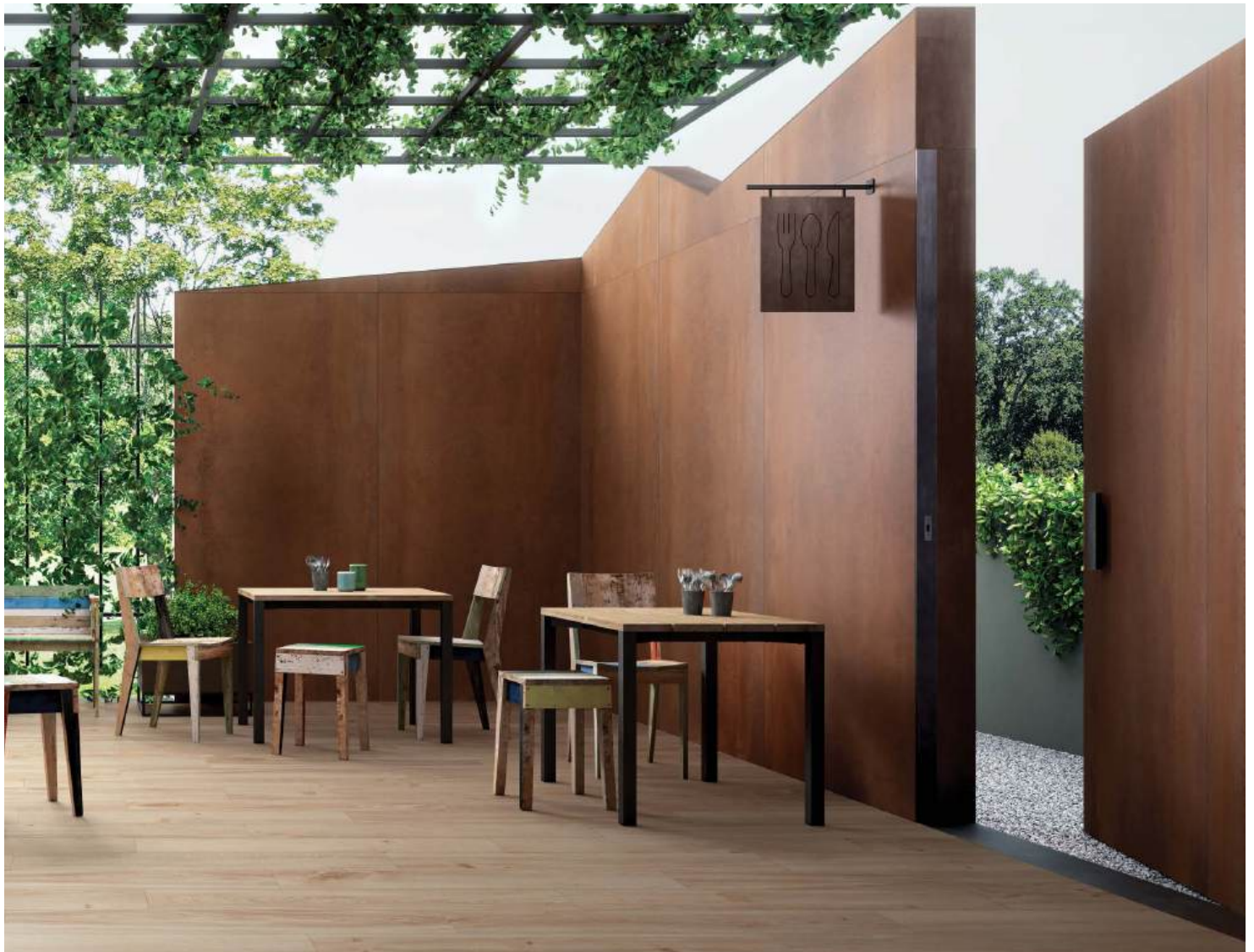
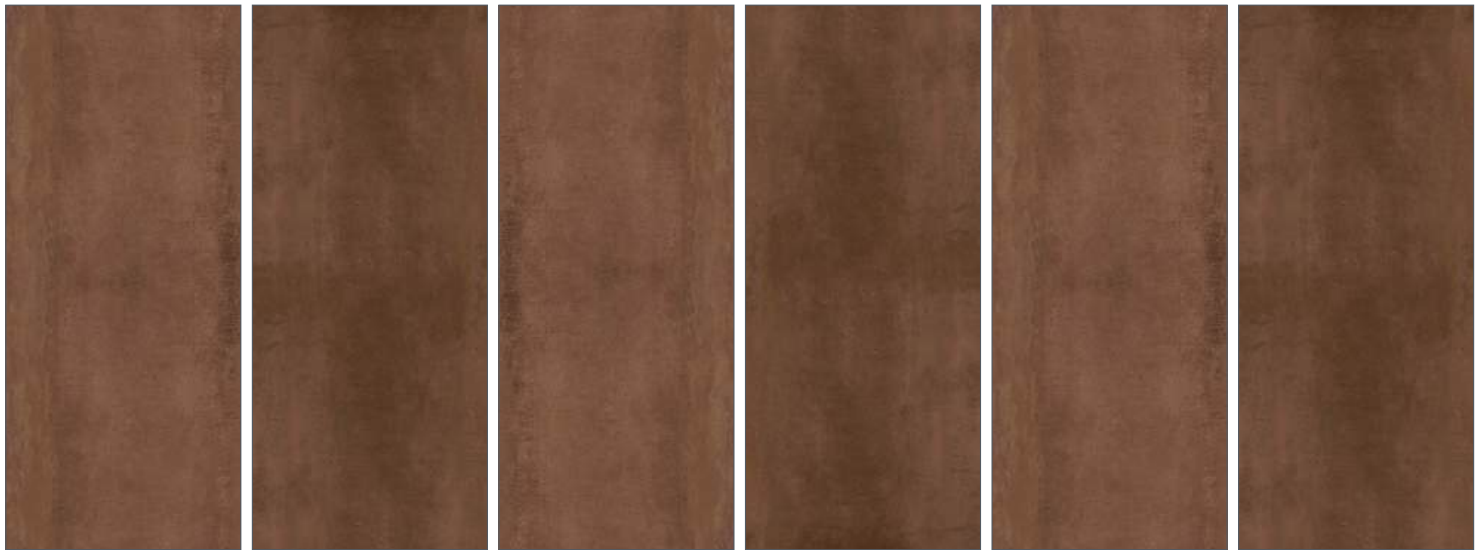
CLASSIC CONCRETE Tabor

48" x 110" x 1/4" | Matte | 6 faces | HRFCCTA1/4



CLASSIC METAL Corten

48" x 110" x 1/4" | Matte | 6 faces | HRFCMCO1/4



GEMSTONE Pearl

60" x 120" x 1/4" | Bright Finish | 4 Faces | HRIGEPE1/4L



*special order sizes: 60"x60", 30"x60", 30"x30", 15"x30"

(6-8 weeks lead time. minimum qty. required.)

MARMI Bianco Lasa

60" x 120" x 1/4" | Bright Finish | 4 Faces | HRIMABL1/4L



*special order sizes: 60"x60", 30"x60", 30"x30", 15"x30"

(6-8 weeks lead time. minimum qty. required.)

MARMI Statuario Delicato

60" x 120" x 1/4" | Bright Finish | 4 Faces | HRIMASD1/4L



*special order sizes: 60"x60", 30"x60", 30"x30", 15"x30"

(6-8 weeks lead time. minimum qty. required.)

MARMI Venato Extra

60" x 120" x 1/4" | Bright Finish | 4 Faces | HRIMAVX1/4L



*special order sizes: 60"x60", 30"x60", 30"x30", 15"x30"

(6-8 weeks lead time. minimum qty. required.)

MARMI Travertino Classico

60" x 120" x 1/4" | Bright Finish | 4 Faces | HRIMATC1/4L



*special order sizes: 60"x60", 30"x60", 30"x30", 15"x30"

(6-8 weeks lead time. minimum qty. required.)

MARMI White Calacatta

60" x 120" x 1/4" | Bright Finish | 4 Faces | HRIMAWC1/4L



*special order sizes: 60"x60", 30"x60", 30"x30", 15"x30"

(6-8 weeks lead time. minimum qty. required.)

ONICE Alabastrino

60" x 120" x 1/4" | Bright Finish | 4 Faces | HRIOIAL1/4L



*special order sizes: 60"x60", 30"x60", 30"x30", 15"x30"

(6-8 weeks lead time. minimum qty. required.)

ONICE Avorio

60" x 120" x 1/4" | Silky Finish | 4 Faces | HRIOIAV1/4



*special order sizes: 60"x60", 30"x60", 30"x30", 15"x30"

(6-8 weeks lead time. minimum qty. required.)

ONICE Ghiaccio

60" x 120" x 1/4" | Bright Finish | 4 Faces | HRIOIGH1/4L



*special order sizes: 60"x60", 30"x60", 30"x30", 15"x30"

(6-8 weeks lead time. minimum qty. required.)

ONICE Perla

60" x 120" x 1/4" | Bright Finish | 4 Faces | HRIOIPE1/4L



*special order sizes: 60"x60", 30"x60", 30"x30", 15"x30"

(6-8 weeks lead time. minimum qty. required.)

ONICE Reale

60" x 120" x 1/4" | Bright Finish | 4 Faces | HRIOIRE1/4L

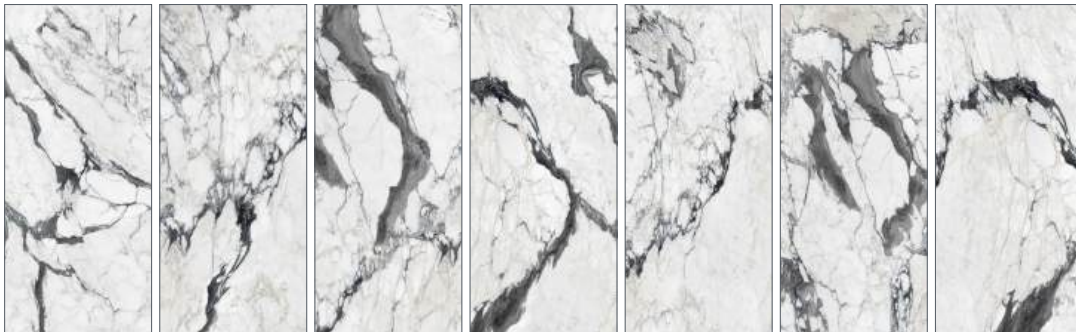


*special order sizes: 60"x60", 30"x60", 30"x30", 15"x30"

(6-8 weeks lead time. minimum qty. required.)

EUROSTONE Altissimo

48" x 110" x 1/4" | Polished | 7 faces | MAIEUAL1/4L



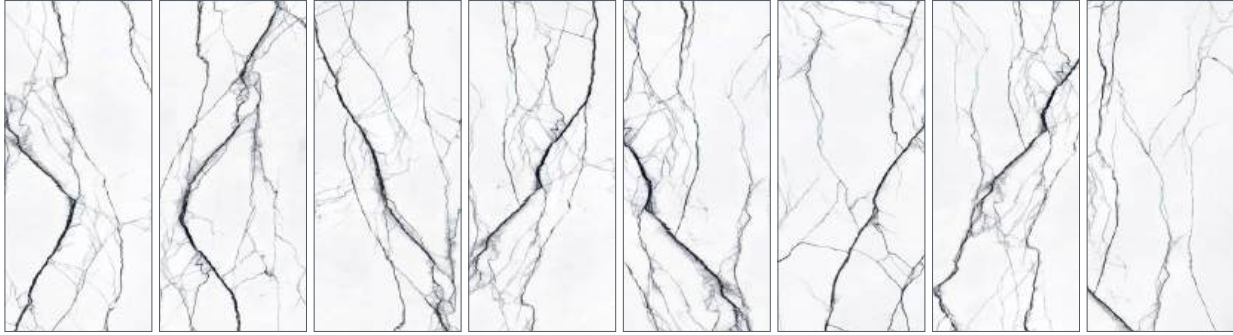
EUROSTONE *Argent*

48" x 110" x 1/4" | Polished | 9 faces | MAIEUAR1/4L



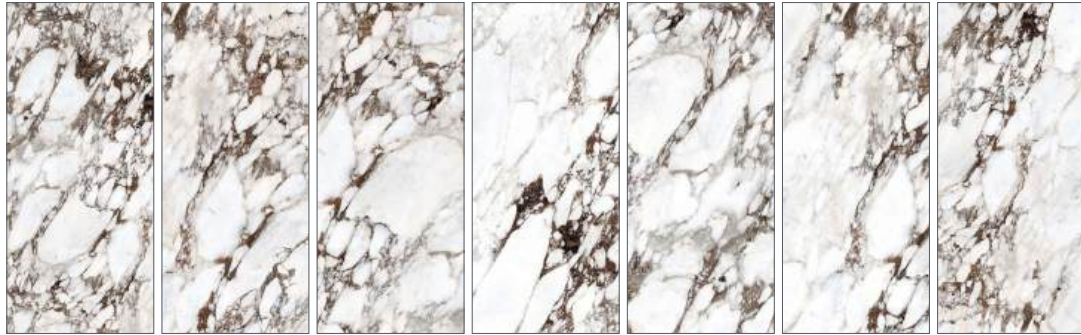
EUROSTONE Black Lincoln

48" x 110" x 1/4" | Polished | 8 faces | MAIEUBL1/4L



EUROSTONE Capraia

48" x 110" x 1/4" | Polished | 7 faces | MAIEUCA1/4L



EUROSTONE Oro

48" x 110" x 1/4" | Polished | 8 faces | MAIEUOR1/4L



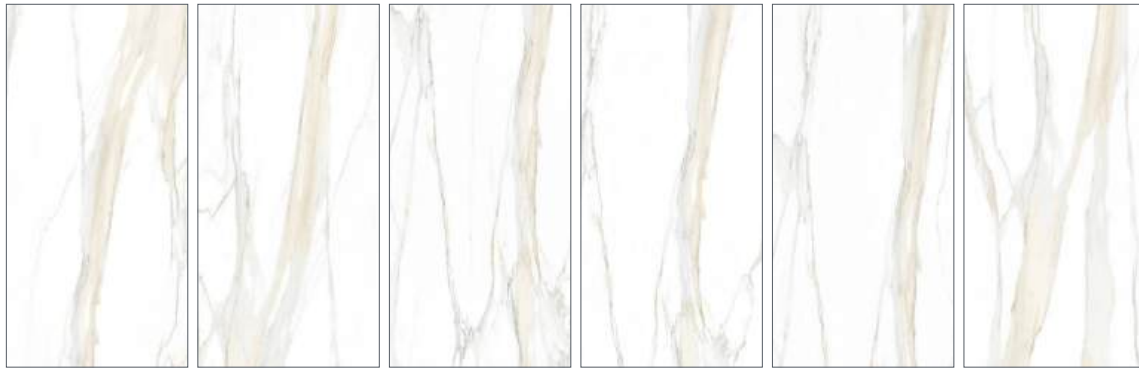
EUROSTONE Venatino

48" x 110" x 1/4" | Polished | 5 faces | MAIEUVE1/4L



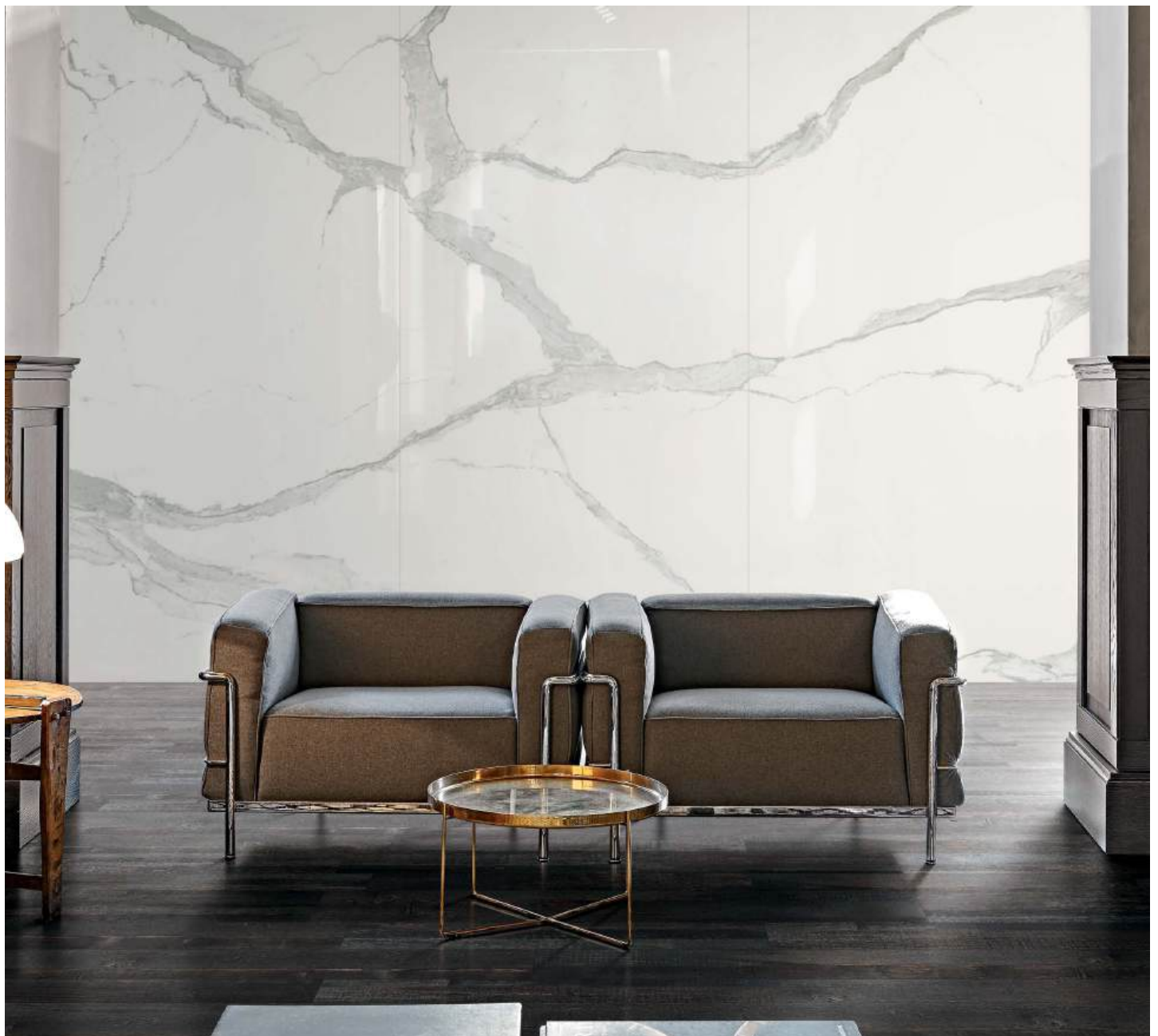
EVER-STONE Calacatta Gold

48" x 96" x 1/4" | Matte: HRREVCG1/4 + Polished: HRREVCG1/4L | 6 faces



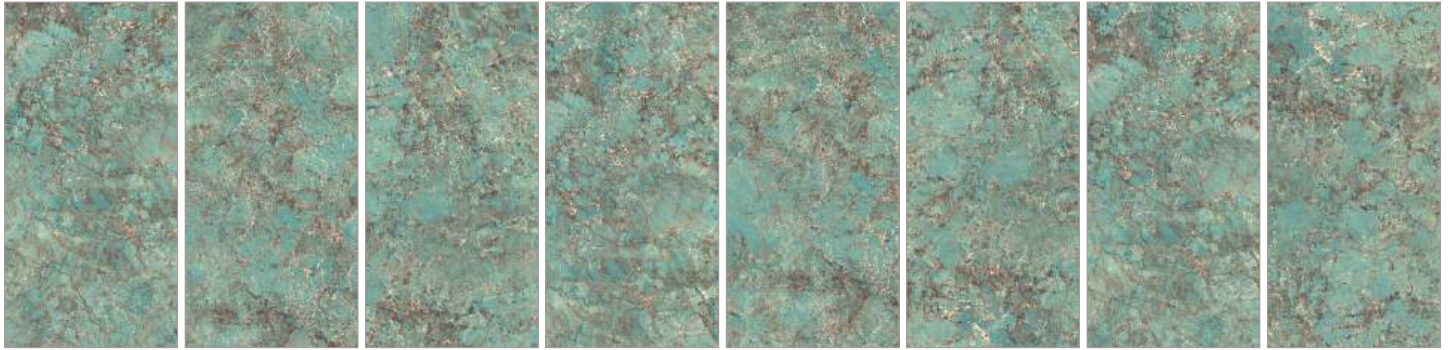
EVER-STONE Statuario

48" x 96" x 1/4" | Matte: HRREVST1/4 + Polished: HRREVST1/4L | 6 faces



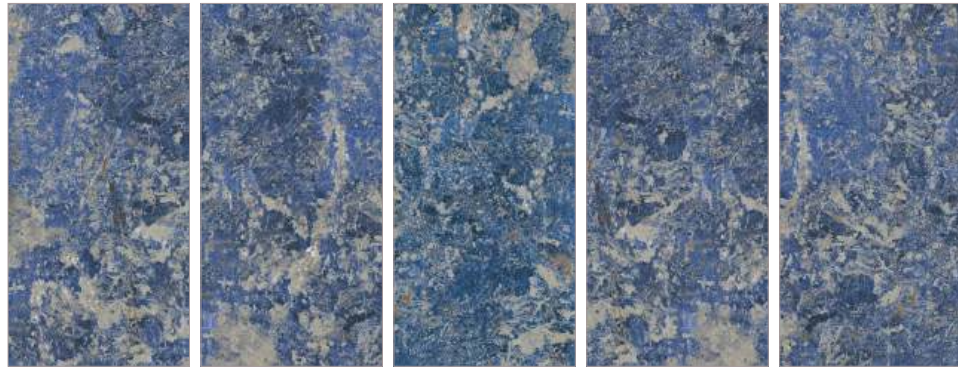
EVER-STONE Illusion

48" x 96" x 1/4" | Polished | 8 faces | HRREVIL1/4L



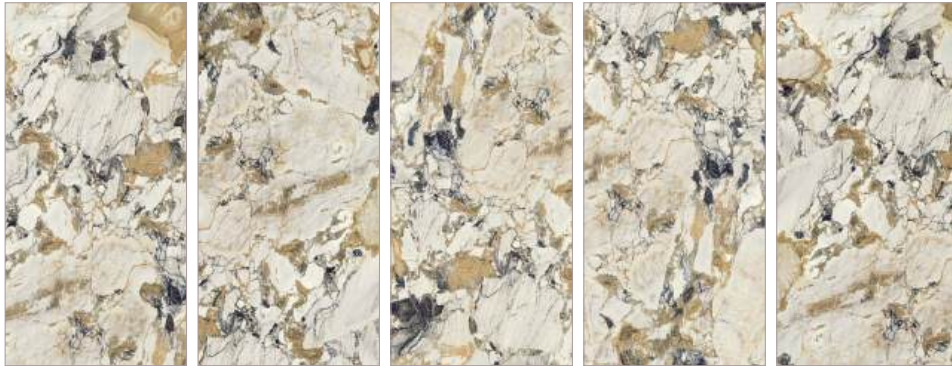
EVER-STONE Sodalite

48" x 96" x 1/4" | Polished | 5 faces | HRREVSO1/4L



EVER-STONE Symphony

48" x 96" x 1/4" | Polished | 5 faces | HRREVSY1/4L



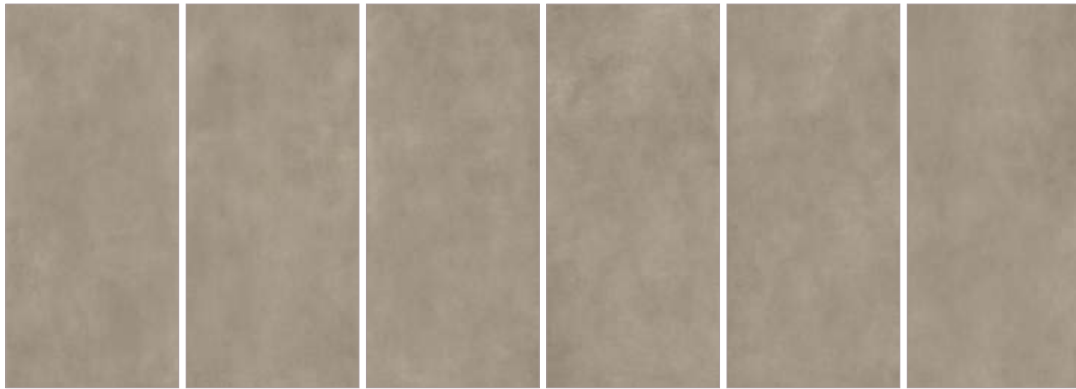
EVER-STONE Tropical

48" x 96" x 1/4" | Polished | 6 faces | HRREVTR1/4L



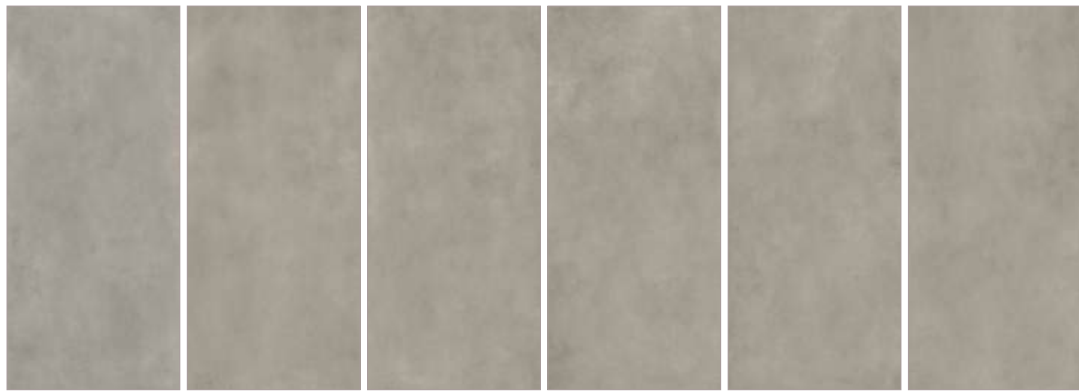
HARMONY Clay

48" x 110" x 1/4" | Natural | 6 faces | HRFHACL1/4L



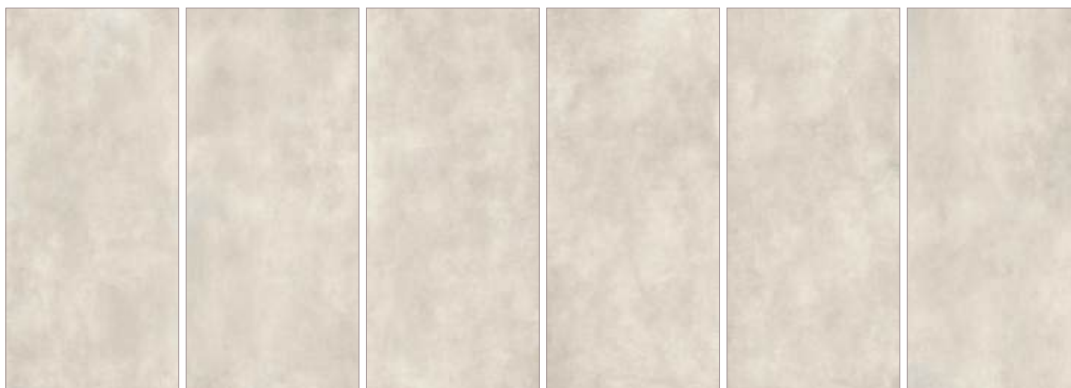
HARMONY Coal

48" x 110" x 1/4" | Natural | 6 faces | HRFHACO1/4L



HARMONY Sugar

48" x 110" x 1/4" | Natural | 6 faces | HRFHASU1/4L



IRONCLAD Black

48" x 106" x 1/4" | Matte | 8 faces | DOMIRBK48106



IRONCLAD Blue

48" x 106" x 1/4" | Matte | 8 faces | DOMIRBL48106



IRONCLAD Dark Grey

48" x 106" x 1/4" | Matte | 8 faces | DOMIRDG48106



IRONCLAD Light Grey

48" x 106" x 1/4" | Matte | 8 faces | DOMIRLG48106



IRONCLAD Rust

48" x 106" x 1/4" | Matte | 8 faces | DOMIRRU48106



LUCA Grey

48" x 110" x 1/4" | 5 faces | Matte: HRVLUGR1/4 + Polished: HRVLUGR1/4L



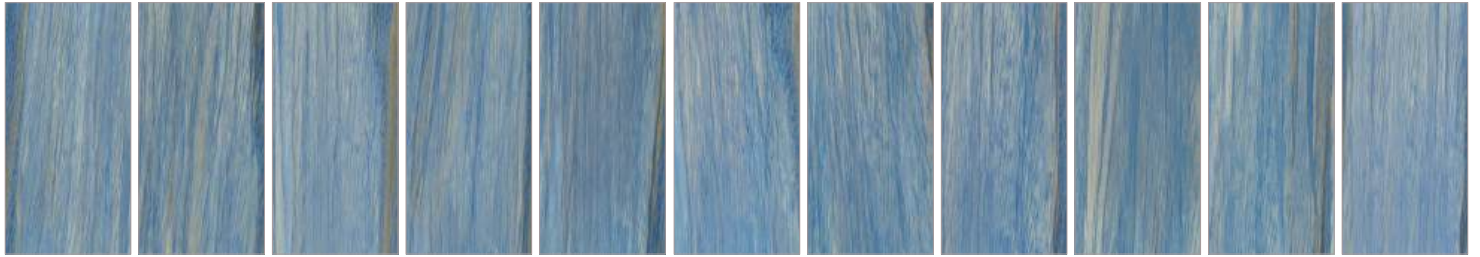
LUCA Oro

48" x 110" x 1/4" | 5 faces | Matte: HRVLUOR1/4 + Polished: HRVLUOR1/4L



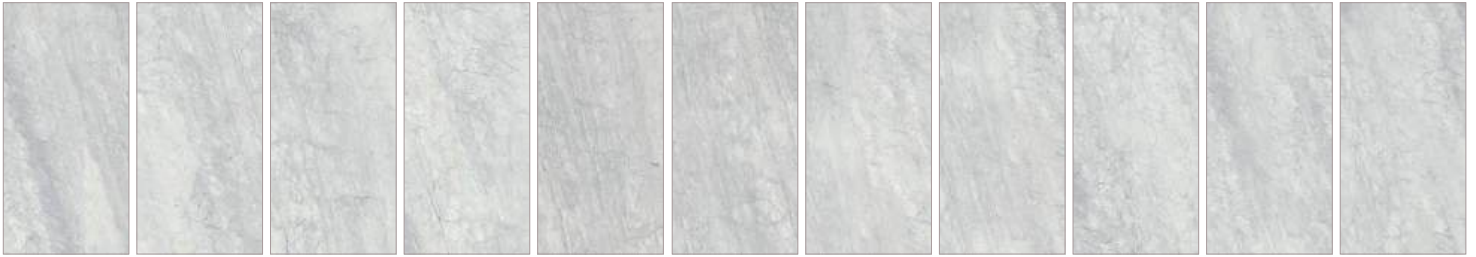
RENAISSANCE *Azul Macauba*

48" x 96" x 1/4" | Polished | 11 faces | SLPRNAM1/4L



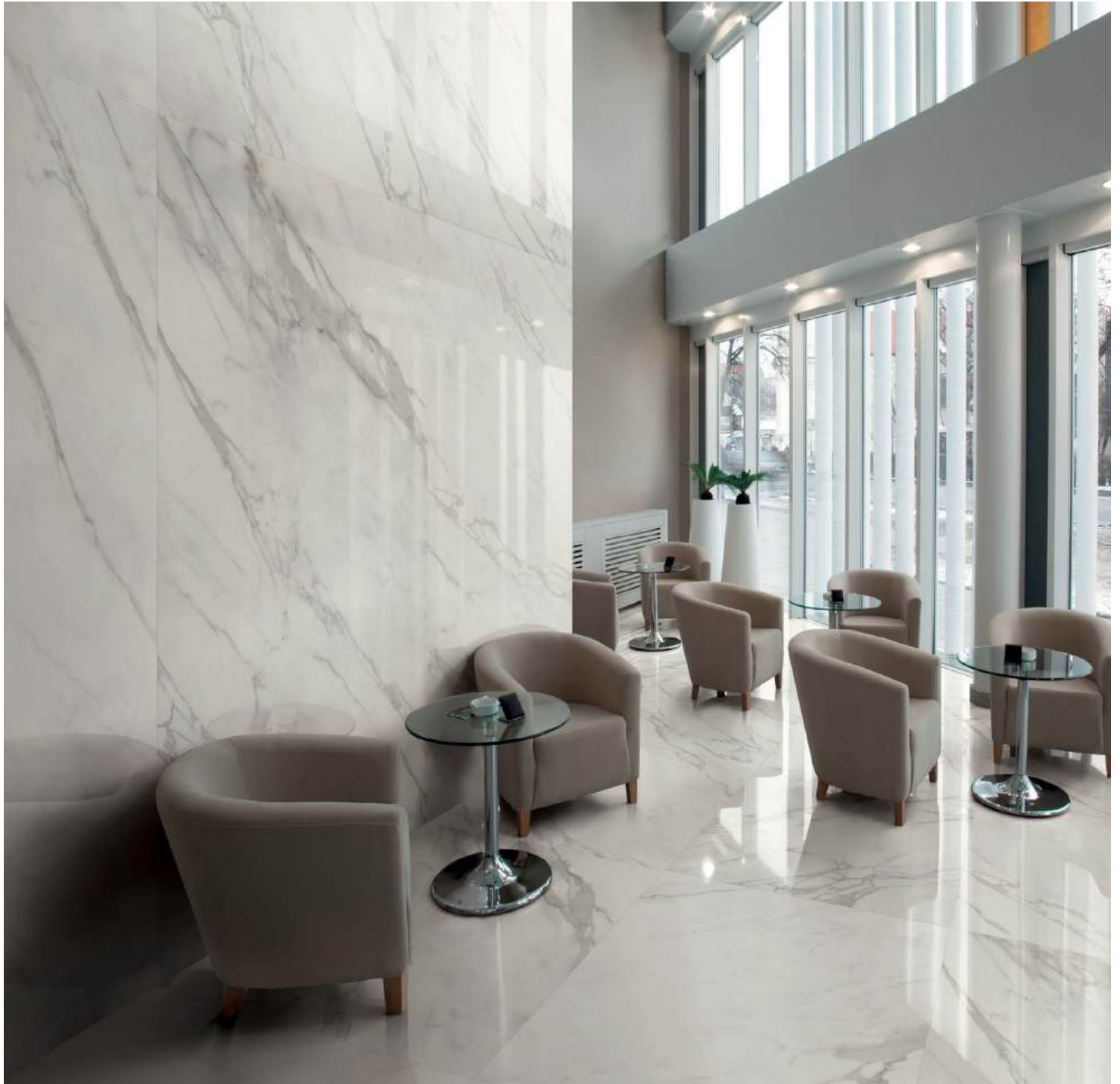
RENAISSANCE Bardiglio

48" x 96" x 1/4" | Polished | 11 faces | SLPRNBA1/4L



RENAISSANCE Calacatta

48" x 96" x 1/4" | Polished | 11 faces | SLPRNCA1/4L



RENAISSANCE Calacatta

48" x 96" x 1/4" | Polished | 2 Book-Matched faces | SLPRNCA1/4LA + SLPRNCA1/4LB



RENAISSANCE Crema Marfil

48" x 96" x 1/4" | Polished | 11 faces | SLPRNCR1/4L



RENAISSANCE Dolomite

48" x 96" x 1/4" | Polished | 11 faces | SLPRNDO1/4L



RENAISSANCE Onyx Beige

48" x 96" x 1/4" | Polished | 11 faces | SLPRNOB1/4L



RENAISSANCE Onyx White

48" x 96" x 1/4" | Polished | 11 faces | SLPRNOW1/4L



RENAISSANCE Rio Black

48" x 96" x 1/4" | Polished | 11 faces | SLPRNRB1/4L



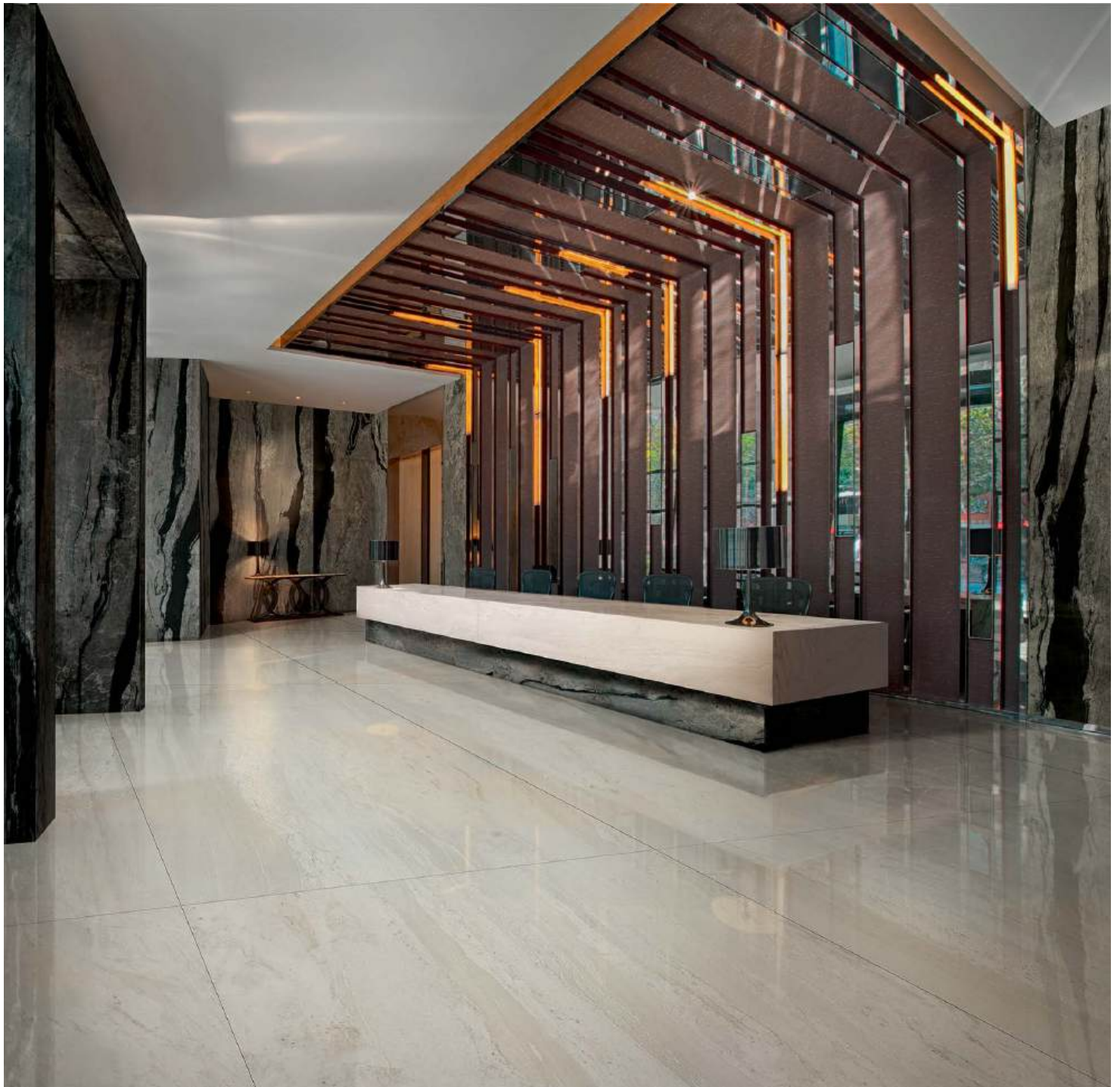
RENAISSANCE Rio Grey

48" x 96" x 1/4" | Polished | 11 faces | SLPRNRG1/4L



RENAISSANCE Rio White

48" x 96" x 1/4" | Polished | 11 faces | SLPRNRW1/4L



RENAISSANCE Statuario

48" x 96" x 1/4" | Polished | 11 faces | SLPRNST1/4L



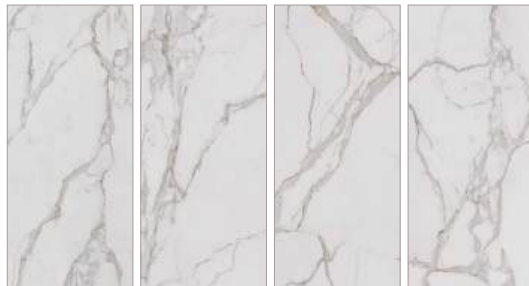
RENAISSANCE Statuario

48" x 96" x 1/4" | Polished | 2 Book-Matched faces | SLPRNCA1/4LA + SLPRNCA1/4LB



RENAISSANCE 2 Calacatta Oro

48" x 110" x 1/4" | Polished | 4 faces | SLPR2CO1/4L



RENAISSANCE 2 Statuario Reale

48" x 110" x 1/4" | Polished | 6 faces | SLPR2SR1/4L



RENAISSANCE 2 Onice Serpentino

48" x 110" x 1/4" | Polished | 11 faces | SLPR2OS1/4L



RENAISSANCE 2 Macchia Antica

48" x 110" x 1/4" | Polished | 5 faces | SLPR2MA1/4L



RENAISSANCE 2 Bronze Amani

48" x 110" x 1/4" | Polished | 11 faces | SLPR2BA1/4L



The marketing name for this product is property of Cobsa USA. This same product may be marketed under different names.

