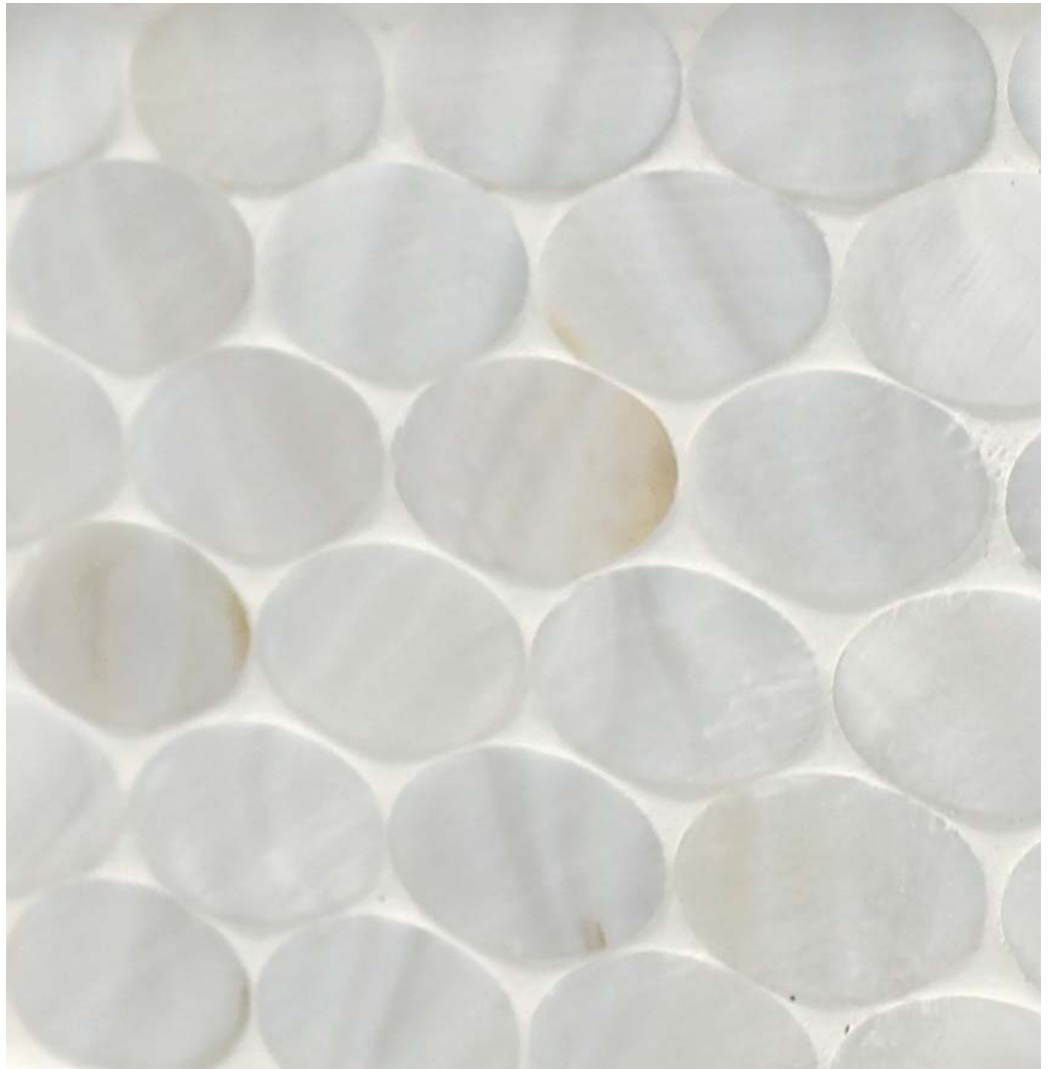
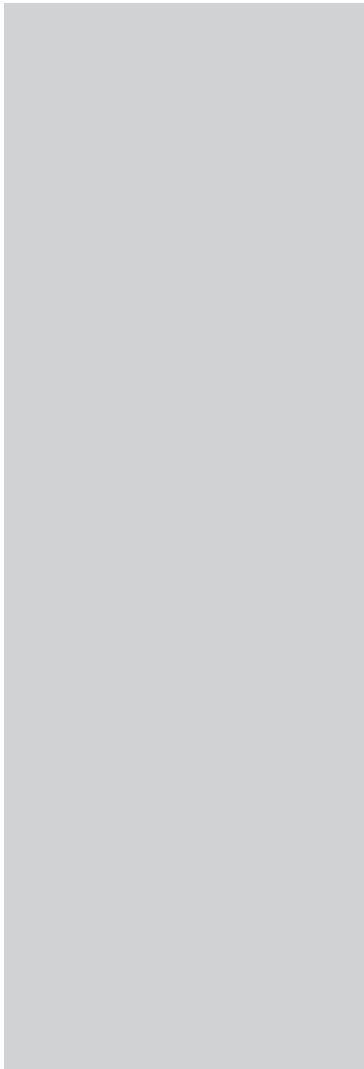
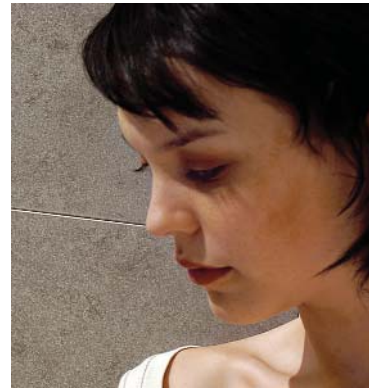


shellstone

genuine shellstones



COBSA-USA

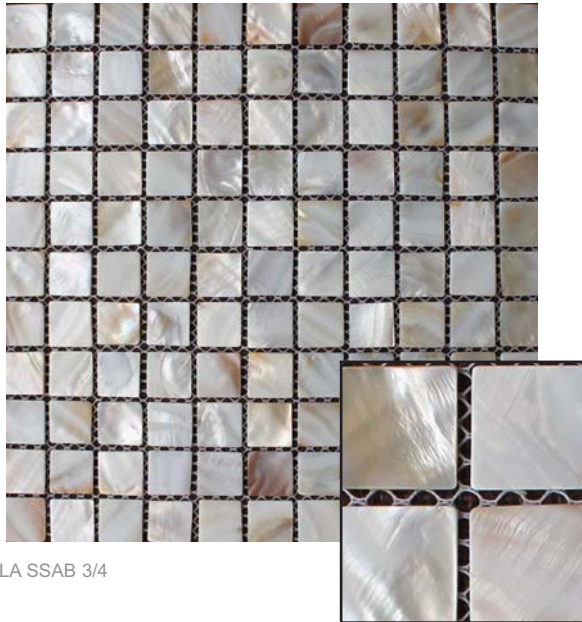
NEW YORK | NEW JERSEY | MIAMI

| Small Brick 1/2' x 1" |



GLA SSAB SMBRK

| Square 3/4" x 3/4" |



GLA SSAB 3/4

| Oval 1/2" x 1 1/4" |



GLA SSAB OVALS



Installation and Maintenance of Glass and Shell Blends.

Glass tile may be susceptible to scratching from handling during installation, as well as use. Expect variation of color from each production run.

Installation

Only use adhesives with high adhesion and elasticity. They are especially recommended for installing glass. Make sure to get complete coverage. All substrates should be properly reinforced to be sure there is no movement. For mortar installations, the mortar bed has to be cured (less than 2% humidity) and has to have proper reinforcing. Please refer to the TCNA HANDBOOK for more specific information regarding installation of glass tile.

Adhesives & Grouting

Any type of cement based adhesive and grout is suitable. For this product we recommend white setting material to set shellstones in. Thin set can act as grout as well.

Maintenance

Use a non-abrasive cloth and neutral detergents for cleaning. Avoid acid detergents, chemicals and solvents.

Usage

It is recommended for interior walls and can be used for shower walls. Light traffic flooring only

COBSA-USA

NEW YORK | NEW JERSEY | MIAMI

FOR INFORMATION AND SAMPLES
T | 1-877-TO-COBSA W | www.COBSAUSA.COM

Due to printing and variations, colors shown could vary from actual sample.