

Textile

porcelain stoneware



COBSA-USA

NEW YORK | NEW JERSEY | MIAMI

PORCELAIN STONEWARE

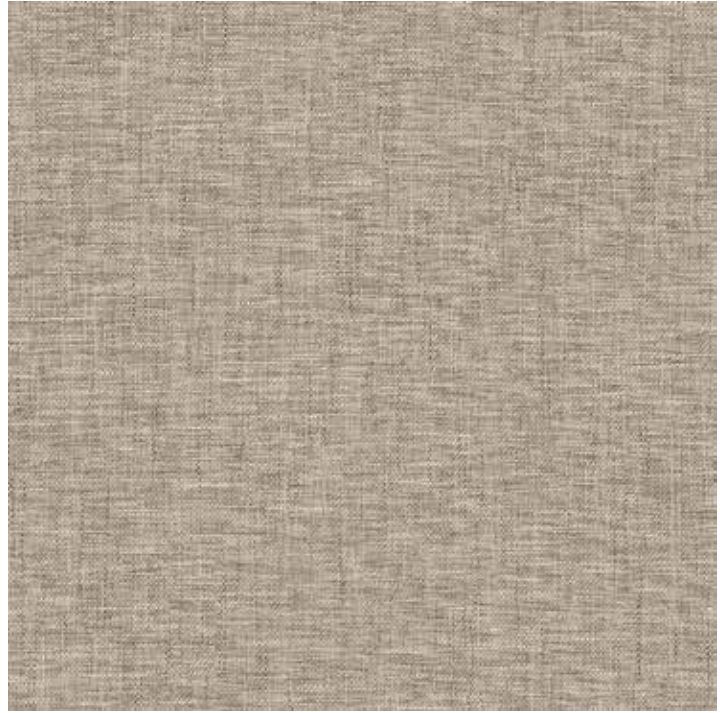


ELETEEC1224



| 12x24 |

ELETEEC24



| 24x24 |

ELETEECMOS22



| 2x2 mosaic: dark mix |

ELETEECMOSHEX



| hexagon mosaic: dark mix |

ELETEEC24D



| 24x24: dark deco |

ELETEECBN324



| 3x24 bullnose |

PORCELAIN STONEWARE



ELETEGR1224



| 12x24 |

ELETEGR24



| 24x24 |

ELETEGRMOS22



| 2x2 mosaic: dark mix |

ELETEGRMOSHEX



| hexagon mosaic: dark mix |

ELETEGR24D



| 24x24: dark deco |

ELETEGRBN324



| 3x24 bullnose |

PORCELAIN STONEWARE

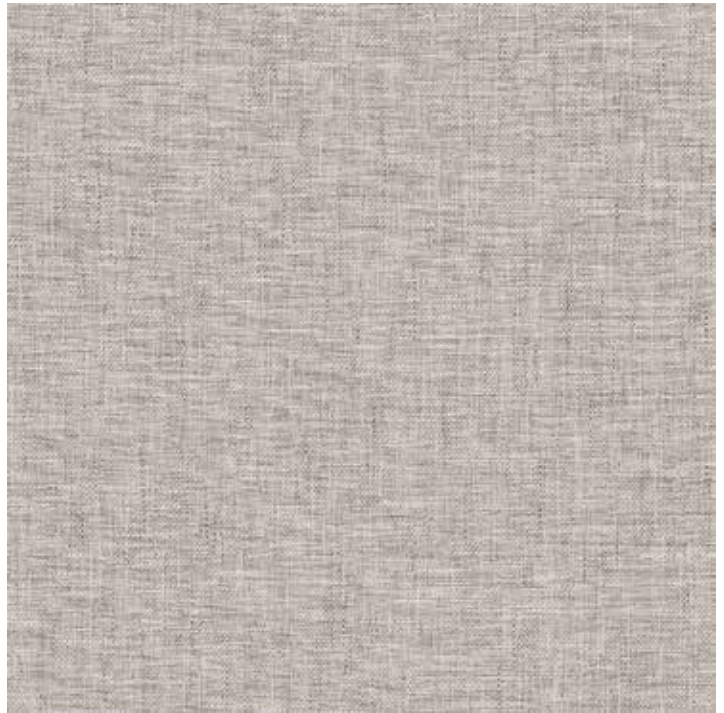


ELETEPE1224



| 12x24 |

ELETEPE24



| 24x24 |

ELETEPEMOS22



| 2x2 mosaic: *light mix* |

ELETEPE24D



| 24x24: *light deco* |

ELETEPEMOSHEX



| hexagon mosaic: *light mix* |

ELETEPEBN324



| 3x24 bullnose |

PORCELAIN STONEWARE



ELETESA1224



| 12x24 |

ELETESA24



| 24x24 |

ELETESAMOS22



| 2x2 mosaic: dark mix |

ELETESAMOSHEX



| hexagon mosaic: dark mix |

ELETESA24D



| 24x24: dark deco |

ELETESABN324



| 3x24 bullnose |

PORCELAIN STONEWARE

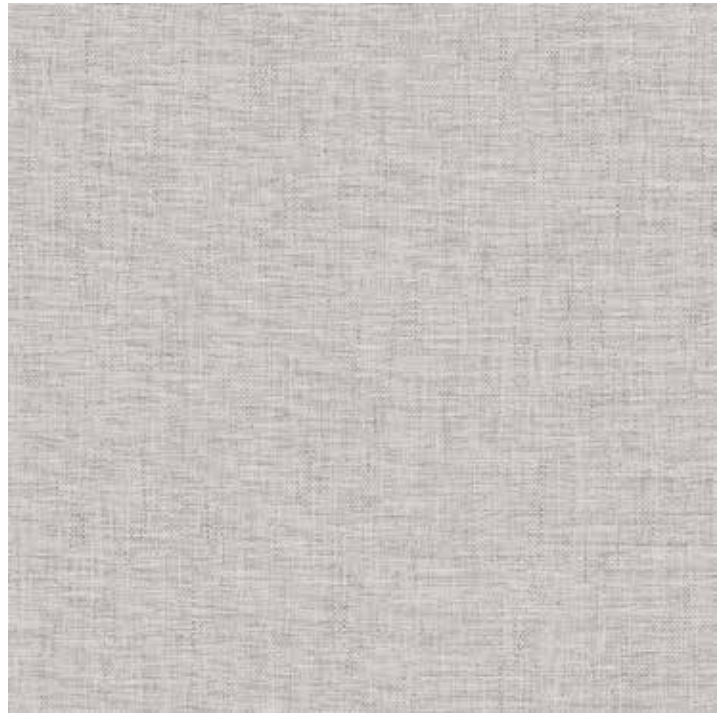


ELETEWH1224



| 12x24 |

ELETEWH24



| 24x24 |

ELETEWHMOS22



| 2x2 mosaic: *light mix* |

ELETEWHMOSHEX



| hexagon mosaic: *light mix* |

ELETEWH24D



| 24x24: *light deco* |

ELETEWHBN324



| 3x24 bullnose |



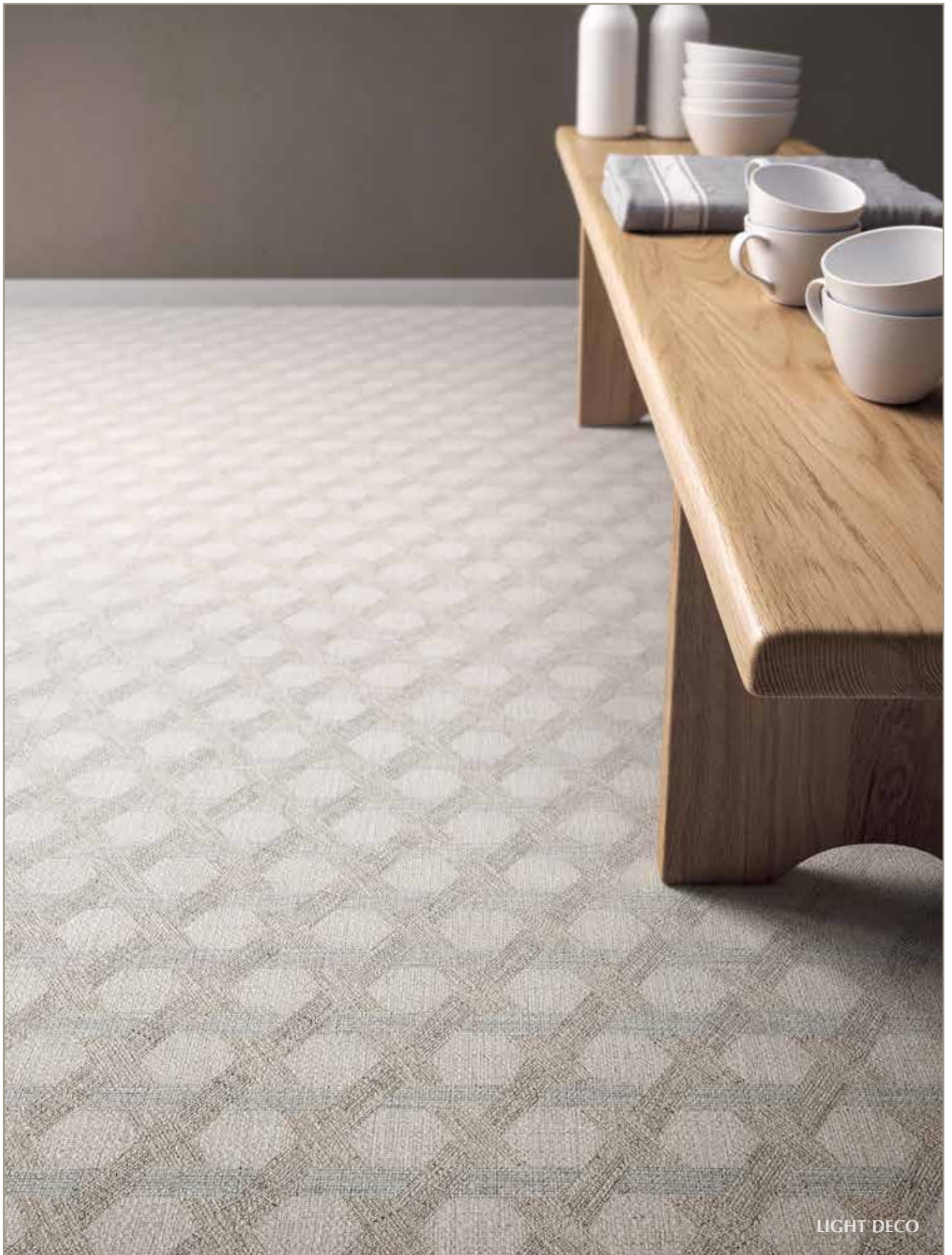
Patchwork Decos



Ecru: ELETEEC88D, Grey: ELETEGR88D, Pearl: ELETEPE88D,
Sand: ELETESA88D, White: ELETEWH88D

| (48) 8x8 Assorted Decos |
randomly mixed per box





LIGHT DECO

Suggested Applications

Floor Wall Residential Light Commercial Heavy Commercial Exterior Pools

*Wear can vary greatly. please consult with a professional.

Installation Suggestions

Plank Installation* Modular Setting Joint Size

*Install the offset the width of the plank. For professional installation, the use of leveling spacers for all plank and rectangular (ie. 12x24) format tiles is recommended.

EDGE: Straight/Pressed Rustic Rectified

FINISH: Matte Polished Structured
 Honed Semi-Polished Other

Porcelain Type

through-body color-bodied glazed unglazed double-loaded other _____

Shade Variation

V1 Uniform Appearance V2 Slight Variation V3 Moderate Variation V4 Substantial Variation

THICKNESS: 10mm # OF FACES:

Slip Resistance

DCOF	Values	Applications
<input checked="" type="checkbox"/> >.42	0.42	Recommended Standard DCOF value for wet/dry commercial flooring
<input type="checkbox"/> >.42	0.65	Recommended Standard DCOF value for ADA Ramps

DIN 51130 *R9: Industry Standard/ADA Requirements **R11: Recommended For Exteriors
 R9* (3-10°) R10 (10-19°) R11** (19-27°)
 R12 (27-35°) R13 (>35°)

DIN 51097

Class	Typical Applications	Critical Angle
<input type="checkbox"/> A	Barefoot, but mainly dry aisles and walkways, dry changing areas	≥12°
<input type="checkbox"/> B	Shower rooms, pool surrounds, wet changing areas, disinfectant spray areas (plus all Class A areas)	≥18°
<input type="checkbox"/> C	Areas constantly under water, e.g. steps into pools, foot baths, inclined pool surrounds, jacuzzis (plus all Class A&B areas)	≥24°

ASTM C-1028
 ANSI A137.1
 DIN 51097/51130

Scratch Resistance

MOH'S SCALE
 UNI EN ISO
 10545.6

MINERAL

1. Talc (Talc)	6. Microline (Glass, Glazed Tile)
2. Gypsum (Fingernail)	7. Quartz (Unglazed Porcelain)
3. Calcite (Penny)	8. Topaz (Granite)
4. Flourite (Some Marbles)	9. Corundum (Ruby)
5. Apatite (Knife Blade)	10. Diamond (Diamond)

Industry standard ≤175mm²

Wear Resistance

PEI RATING
 UNI EN ISO
 10545.7

- Class 1: Walls only
 - Class 2: Residential floors w/minimal abrasive traffic
 - Class 3: Residential interiors/light commercial traffic
 - Class 4: Medium commercial applications
 - Class 5: All commercial applications/heavy traffic
- *Wear can vary greatly. please consult with a professional.

Stain Resistance

ASTM C1378-04
 UNI EN ISO
 10545.14

- 5: Removed after 5 minutes (hot water running)
- 4: Removed by manual cleaning (weak detergent)
- 3: Removed by mechanical cleaning (strong detergent)
- 2: Removed by immersion (24 hrs in suitable solvent)
- 1: Stain not removed

Water Absorption

ASTM C-373
 UNI EN ISO
 10545.3

<input checked="" type="checkbox"/> Absorbs 0-.5%	<input type="checkbox"/> Absorbs .5-3%	<input type="checkbox"/> Absorbs 3-7%	<input type="checkbox"/> Absorbs 7% +
Impervious Interior/Exterior Frost Resistant	Vitreous Interior/Exterior Frost Resistant	Semi-Vitreous Indoor Use Only	Non-Vitreous Indoor Use Only

Breaking Strength

ASTM C648
 UNI EN ISO
 10545.4

Industry standard should be greater than
 250 lbs
 or
 50 N/MM²

Facial Dimension

ASTM c499-09
 UNI EN ISO
 10545.02

	Standard	Tolerance	Result
flatness	±5mm	±.5%	<input type="checkbox"/>
thickness	±6mm	±.5%	<input type="checkbox"/>
straightness	±4.5mm	±.5%	<input type="checkbox"/>
squareness	±5.4mm	±.6%	<input type="checkbox"/>
sides L/W	±1.1mm ±4.5mm	±.5%	<input type="checkbox"/>

Chemical Resistance

ASTM C650
 UNI EN ISO
 10545.13

Allowances for:

	result
Acid	<input type="checkbox"/>
Bases	<input type="checkbox"/>
Chemicals	<input type="checkbox"/>

Leed Information



REQUIREMENTS
 FOR COMMERCIAL
 INTERIORS/NEW
 CONSTRUCTION

Sustainable Sites Site selection SS CREDIT 1 Heat Island Effect-non roof Material with a solar reflectant index of at least 29.	1 Point	<input type="checkbox"/>	Materials & Resources M&R CREDIT 2 Construction Waste Management: Recycling salvaged construction waste in to new reusable materials.	1 Point	50% <input type="checkbox"/>	70% <input type="checkbox"/>
Energy & Atmosphere EA CREDIT 4 Green Power: Products that optimize energy performance for floors and walls using thermal conductivity. BTU-FIT	1 Point	<input type="checkbox"/>	M&R CREDIT 4.1-4.2 Recycled Content: The sum of post consumer plus 1/2 of the pre consumer reps at least 10-20% of total value of materials.	10% <input type="checkbox"/>	20% <input type="checkbox"/>	
Indoor Environmental Quality Low-Emitting Materials-Flooring Systems IEQ CREDIT 3.1-7 Green Cleaning: Reducing occupants exposure to hazardous cleaning chemicals.	1 Point	<input type="checkbox"/>	M&R CREDIT 5 Regional Materials: Materials manufactured within 500 miles of the project site.	10% <input type="checkbox"/>	20% <input type="checkbox"/>	
IEQ CREDIT 4.1 Low Emitting Adhesives: Products less than 65 G/L VOC		<input type="checkbox"/>	Innovation in Design ID CREDIT 1 Innovation in Design Measurable exemplary environmental performance.			1-5 Points
IEQ CREDIT 4.3 Low Emitting Materials: Flooring systems.		<input type="checkbox"/>				

Type: Porcelain Stoneware

Product Line: Textile

The marketing name for this product is property of Cobsa USA. This same product may be marketed under different names.