



USA

2CM PORCELAIN PAVERS



COBSA USA

NEW YORK | NEW JERSEY | MIAMI

Chalet BEIGE · BIANCO · DARK GRAY · GRAY

NON-STOCK / SPECIAL ORDER (1-2 WEEKS)



PAVCHBE24



beige | 24 x 24 |

PAVCHBI24



bianco | 24 x 24 |

PAVCHDG24



dark gray | 24 x 24 |

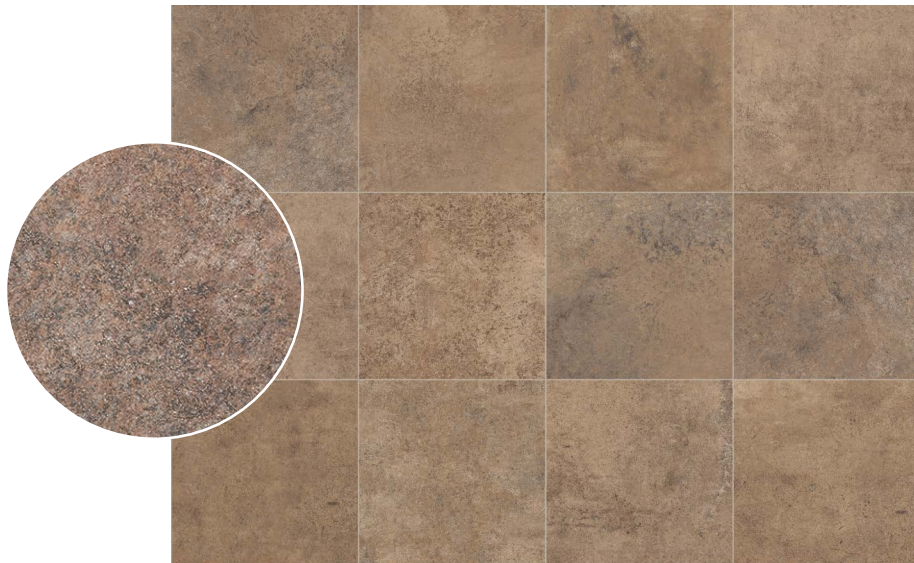
PAVCHGR24



gray | 24 x 24 |

Cotta

NON-STOCK / SPECIAL ORDER (1-2 WEEKS)



PAVCOTT24



| 24 x 24 |

Essence GRAPHITE · GRAY · WHITE

NON-STOCK / SPECIAL ORDER (1-2 WEEKS)



PAVESGP24



graphite | 24 x 24 |

PAVESGR24



gray | 24 x 24 |

PAVESWH24



white | 24 x 24 |

Garden BIANCO · GRAY · NERO

NON-STOCK / SPECIAL ORDER (1-2 WEEKS)



PAVGABI24



bianco | 24 x 24 |

PAVGAGR24



gray | 24 x 24 |

PAVGANE24



nero | 24 x 24 |

Hardwood BROWN · GREY · IVORY

NON-STOCK / SPECIAL ORDER (1-2 WEEKS)



PAVHABR24



brown

| 24 x 24 |

PAVHAGR24



grey

| 24 x 24 |

PAVHAIV24



ivory

| 24 x 24 |

Mountain BEIGE · GREY · NOCE

NON-STOCK / SPECIAL ORDER (1-2 WEEKS)



PAVMTBE1648



beige | 16 x 48 |

PAVMTGR1648



grey | 16 x 48 |

PAVMTNO1648



noce | 16 x 48 |

Maxie

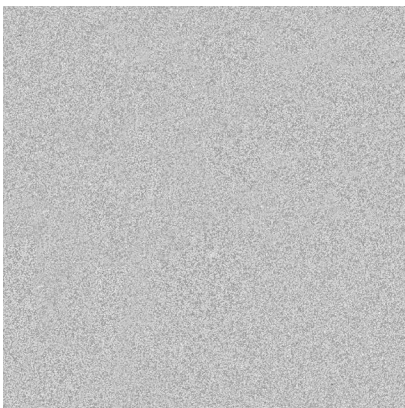
ASH · BASALT · BONE

COGNAC · LEATHER · SAND

NON-STOCK / SPECIAL ORDER (1-2 WEEKS)



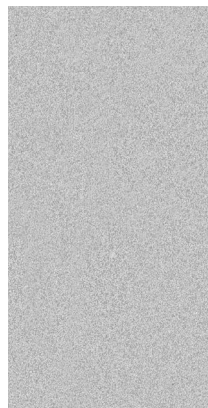
PAVMOAS24



ash

| 24 x 24 |

PAVMOAS1224



| 12 x 24 |

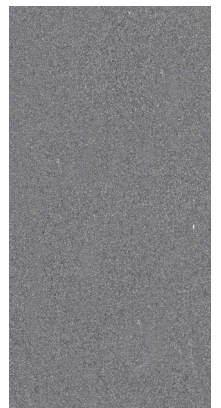
PAVMBAS24



basalt

| 24 x 24 |

PAVMOBA1224



| 12 x 24 |



PAVMOBO24



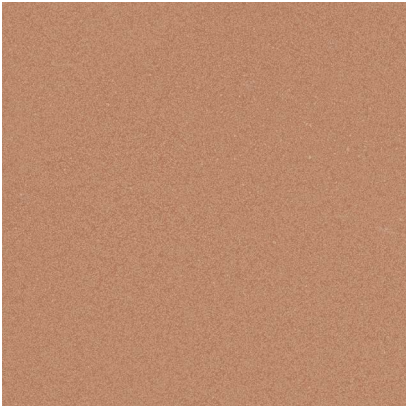
bone | 24 x 24 |

PAVMOBO1224



| 12 x 24 |

PAVMOCO24



cognac | 24 x 24 |

PAVMOCO1224



| 12 x 24 |

PAVMOLE24



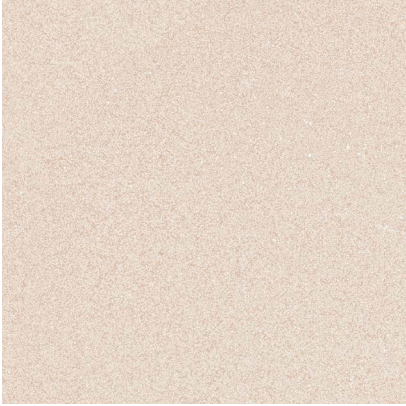
leather | 24 x 24 |

PAVMOLE1224



| 12 x 24 |

PAVMOSA24



sand | 24 x 24 |

PAVMOSA1224

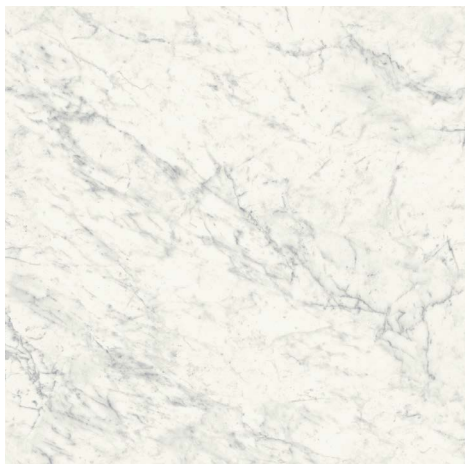


| 12 x 24 |

National CARRARA · DOLOMITE
NON-STOCK / SPECIAL ORDER (1-2 WEEKS)



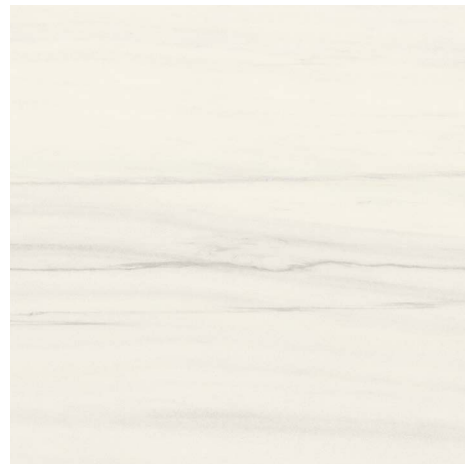
PAVNACR24



carrara

| 24 x 24 |

PAVNADO24



dolomite

| 24 x 24 |

Northeast GREY · IVORY · WHITE

NON-STOCK / SPECIAL ORDER (1-2 WEEKS)



PAVNOGR1632

grey



| 16 x 32 |

PAVNOIV1632

ivory



| 16 x 32 |

PAVNOWH1632

white



| 16 x 32 |

PAVNOGR24



| 24 x 24 |

PAVNOIV24



| 24 x 24 |

PAVNOWH24



| 24 x 24 |

Oceanstone BLACK · TAN · WHITE COOL

NON-STOCK / SPECIAL ORDER (1-2 WEEKS)



PAVOSTA24



tan

| 24 x 24 |

PAVOSTA1224



| 12x 24 |

PAVOSBL24



black

| 24 x 24 |

PAVOSBL1224



| 12x 24 |

PAVOSWC24



white cool

| 24 x 24 |

PAVOSWC1224



| 12x 24 |

Pennsylvania

FULL COLOR · TRUE BLUE

NON-STOCK / SPECIAL ORDER (1-2 WEEKS)



PAVPEFC24



full color

| 24 x 24 |

PAVPETB24



true blue

| 24 x 24 |

ALSO AVAILABLE IN:

12x12

(PAVPEFC12 / PAVPETB12)

12x24

(PAVPEFC1224 / PAVPETB1224)

12x48

(PAVPEFC1248 / PAVPETB1248)

24x48

(PAVPEFC2448 / PAVPETB2448)

12x24 BULLNOSE

(PAVPEFCBN1224 / PAVPETBBN1224)

Primi 2 CEMENTO · CENERE · SANDALO

NON-STOCK / SPECIAL ORDER (1-2 WEEKS)



PAVPMCM24



cemento | 24 x 24 |

PAVPMCN24



cenere | 24 x 24 |

PAVPMSA24



sandalò | 24 x 24 |

PAVPMCM2448



cemento | 24 x 48 |

PAVPMCN2448



cenere | 24 x 48 |

PAVPMSA2448



sandalò | 24 x 48 |

Quartzite

CLOUD · CRYSTAL WHITE · LAGUNA · SANDY ISLAND

NON-STOCK / SPECIAL ORDER (1-2 WEEKS)



PAVQZCL24



cloud

| 24 x 24 |

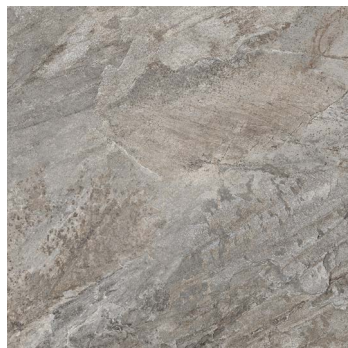
PAVQZCW24



crystal white

| 24 x 24 |

PAVQZLA24



laguna

| 24 x 24 |

PAVQZSI24



sandy island

| 24 x 24 |

Stone CREAMSTONE · MOONSTONE
NON-STOCK / SPECIAL ORDER (1-2 WEEKS)



PAVSNCR24



creamstone

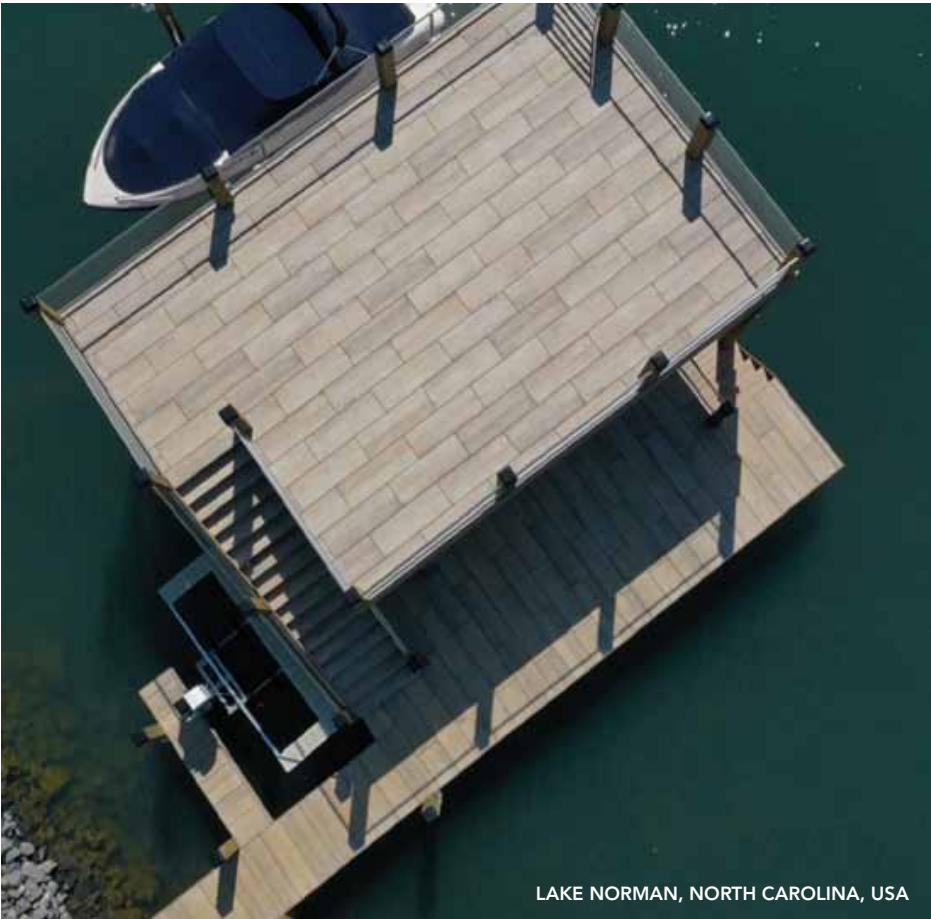
| 24 x 24 |

PAVSNMO24



moonstone

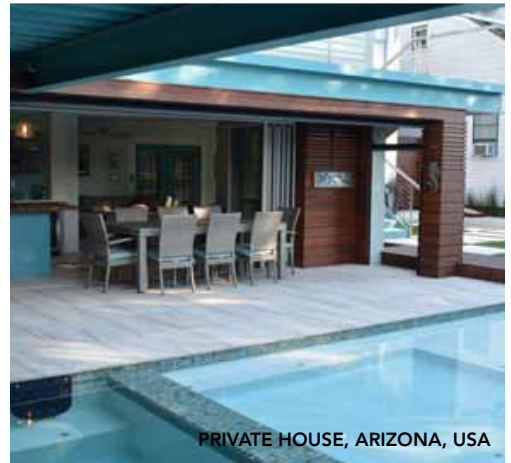
| 24 x 24 |



LAKE NORMAN, NORTH CAROLINA, USA



MONT ROYAL, QUEBEC, CANADA



PRIVATE HOUSE, ARIZONA, USA



PRIVATE HOUSE, USA



PRIVATE HOUSE, USA



NAVARRE BEACH, FLORIDA, USA



PRIVATE HOUSE, USA



PRIVATE HOUSE, USA

Techno

COOL GREY · CHARCOAL · COOL WHITE
GREY BLACK · WHITE BLACK

NON-STOCK / SPECIAL ORDER (1-2 WEEKS)



PAVTEGB24



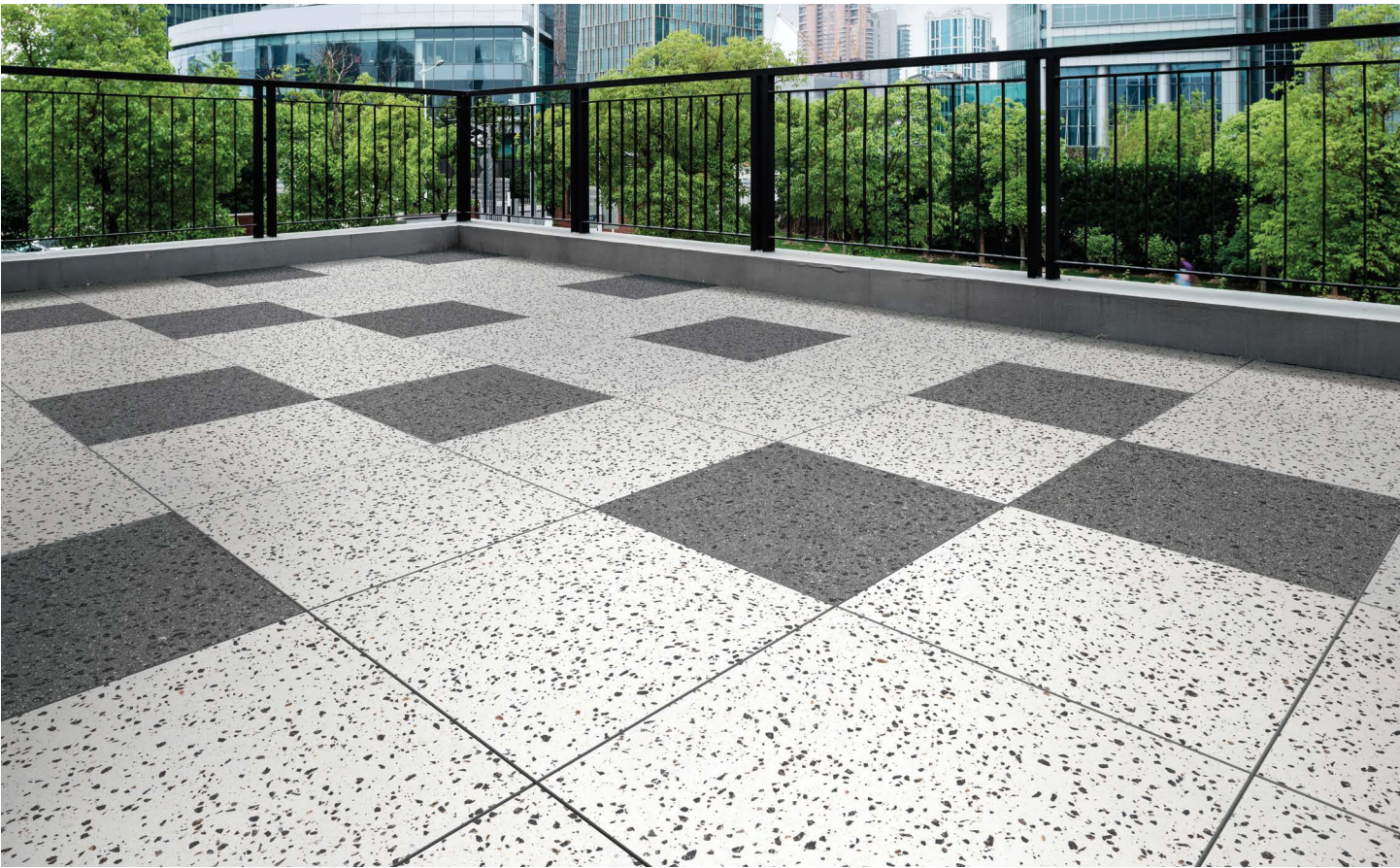
grey black

| 24 x 24 |

PAVTEGB1224



| 12 x 24 |



PAVTEWB24



white black | 24 x 24 |

PAVTEWB1224



| 12 x 24 |

PAVTECH24



charcoal | 24 x 24 |

PAVTECH1224



| 12 x 24 |

PAVTECG24



cool grey | 24 x 24 |

PAVTECG1224



| 12 x 24 |

PAVTECW24



cool white | 24 x 24 |

PAVTECW1224



| 12 x 24 |

Tivoli Travertine

NON-STOCK / SPECIAL ORDER (1-2 WEEKS)

AVORIO · CAPPUCCINO · CREMA · PEARL · RIVER · SHELL · SILVER · WALNUT



AVORIO

CAPPUCCINO

CREMA

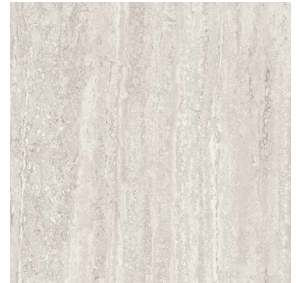
PEARL

PAVTTAV24

PAVTTCA24

PAVTTCR24

PAVTTPE24



| 24 x 24 |

| 24 x 24 |

| 24 x 24 |

| 24 x 24 |

PAVTTAV2448

PAVTTCA2448

PAVTTCR2448

PAVTTPE2448



| 24 x 48 |

| 24 x 48 |

| 24 x 48 |

| 24 x 48 |

* ALSO AVAILABLE: 12X12 + 12X24



RIVER

SHELL

SILVER

WALNUT

PAVTTRI24

PAVTTSH24

PAVTTSI24

PAVTTWA24



| 24 x 24 |

| 24 x 24 |

| 24 x 24 |

| 24 x 24 |

PAVTTRI2448

PAVTTSH2448

PAVTTSI2448

PAVTTWA2448



| 24 x 48 |

| 24 x 48 |

| 24 x 48 |

| 24 x 48 |

* ALSO AVAILABLE: 12X12 + 12X24





Timber IPE · TEAK

NON-STOCK / SPECIAL ORDER (1-2 WEEKS)



PAVTIIP24



ipe

| 24 x 24 |

PAVTITE24



teak

| 24 x 24 |

Travertini BEIGE · GRAY

NON-STOCK / SPECIAL ORDER (1-2 WEEKS)



PAVTRBE1632



| 16 x 32 |

PAVTRBE24



beige

| 24 x 24 |

PAVTRGR24



gray

| 24 x 24 |

PAVTRGR1632



| 16 x 32 |

Westside BEIGE · GRAY · WHITE
NON-STOCK / SPECIAL ORDER (1-2 WEEKS)



PAVWSGR24



gray

| 24 x 24 |

PAVWSWH24



white

| 24 x 24 |

Garden

RECTIFIED MODULAR
GRAY

Travertini

RECTIFIED MODULAR
BEIGE



PAVGAGR12MOD
PAVGAGR24MOD
PAVGAGR1224MOD



PAVTRBE12MOD
PAVTRBE24MOD
PAVTRBE1224MOD

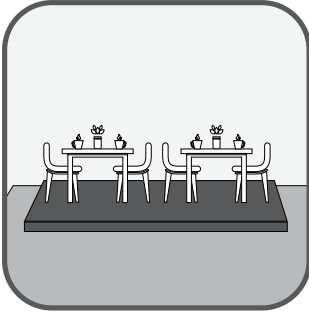
technical characteristics of 2CM PORCELAIN PAVERS

STANDARDS

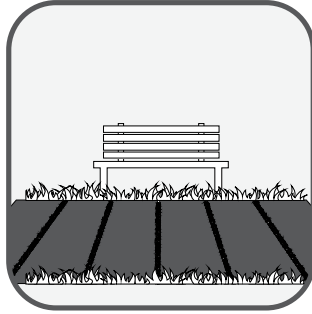


ISO 10545-3	Water absorption	$E < = 0,5 \%$	0,05 %
ISO 10545-9v	Thermal shock resistance	Requested	Complies with standard
ISO 10545-12	Frost resistance	Requested	Complies with standard
ISO 10545-6	Abrasive wear	$< 175 \text{ mm}^2$	139 mm ²
ISO 10545-2	Thickness	$\pm 5,0 \%$ MAX	Complies with standard
	Length and width	$\pm 0,6 \%$ MAX	Complies with standard
ISO 10545-4	Bending strength	$S_p > / = 7,5 \text{ mm}$ $S > / = 1300 \text{ N}$	S 10.000 N sp. 15 S 13.600 N sp. 20
ISO 10545-14	Resistance to stain	-	5
ISO 10545-13	Chemical resistance	UB min.	UA ULA UHA
ISO 10545-8	Coefficient of linear thermal-expansion	-	60 6,3x10 c'
ISO 10545-5	Impact resistance	-	0,88
EN 12825	Static load	-	Centre 9,6 Kn Centre point of sides 6,5 Kn Diagonal 8,19 Kn (CLASSE 3)
	Dynamic load capacity - hand object impact test	-	Test not passed
	Dynamic load capacity - soft object impact test	-	Test passed
EN 1339	Bending strength - breaking force in N	Kn 14,38	classe 14
ENV 12633	Pendulum Test - Slip resistance	$> / = \text{CL1}$	CL 2
DIN 51130	Slip resistance	-	R11
DIN 51097	Slip resistance	-	A + B + C min.
DIN 51094	Color resistance to light	Tiles must not produce noticeable colour variation	Resistant
DM 236/89 B.C.R.A.	Slip resistance	-	$> 0,40$
ASTM 1028-07 BOT 3000	Slip resistance	-	$> 0,60 \text{ WET}$ $> 0,60 \text{ DRY}$ $> 0,42$
EN 13501-1	Fire resistance	-	A1 - A1 FL

where to install
2CM PORCELAIN PAVERS



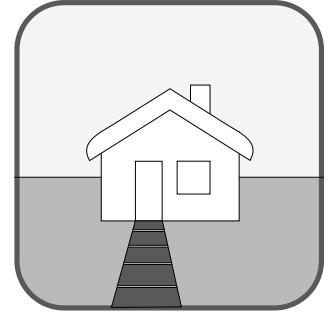
Sidewalk cafes



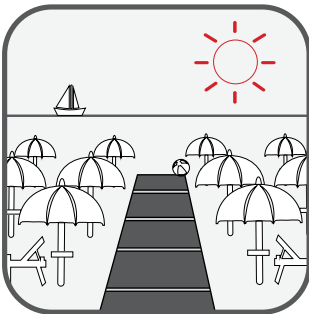
Walkways and pathways



Gardens and patios



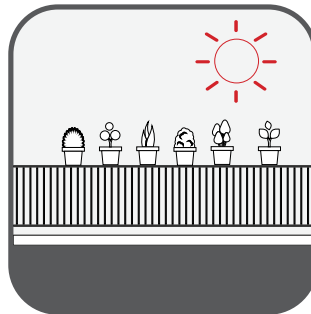
Garden paths



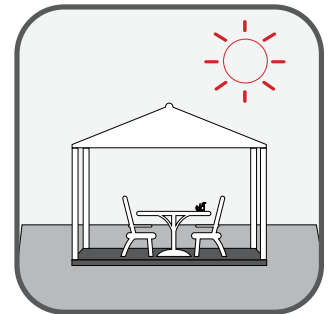
Beach resorts



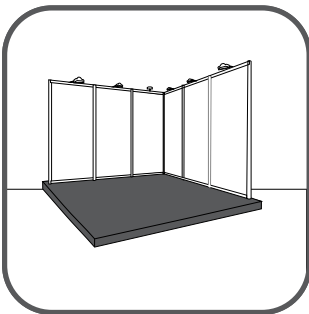
Swimming-pools



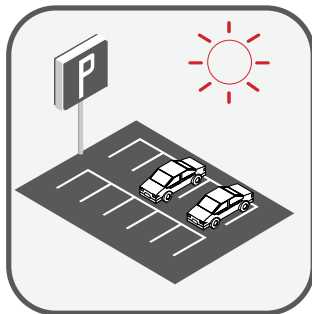
Terraces and balconies



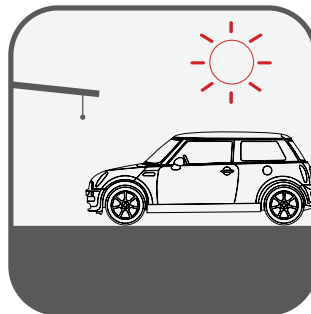
Gazebos



Exhibitions and events



Public parks



Public parkings

why choose 2CM PORCELAIN PAVERS?



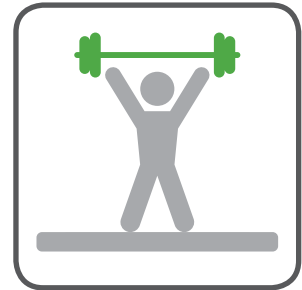
Thermal shock resistant.
(-40°F - 210°F)



Superior in fire resistance
and durability to wood tiles



Easy to clean. Stain,
chemical and salt resistant



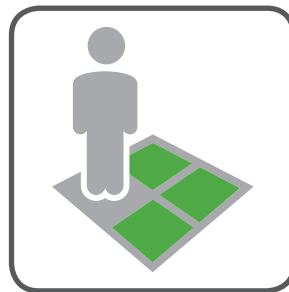
Superior in strength and
impact resistance to
ceramic tiles (supports over
2000lb), lighter and easier
to handle than concrete
blocks



Virtually no maintenance



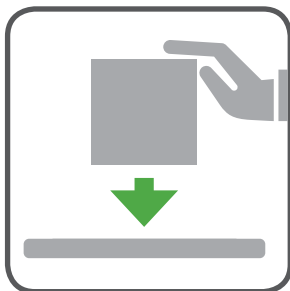
Slip resistant and quick
draining



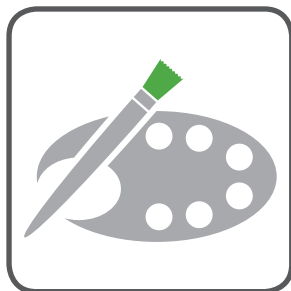
Easy to install



Removable and reusable
POPA 2.0 is ideal both for
temporary flooring and for
permanent flooring



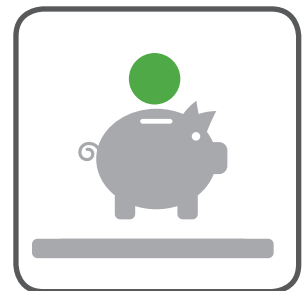
Versatile installation.
Various installation methods
including pedestal set,
gravel and grass set.
They offer endless
opportunities for landscape
design creativity in both
domestic and commercial
applications.



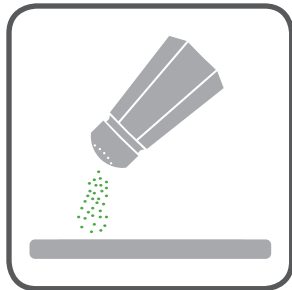
Fade resistant



Available in a broad range
of colors/styles



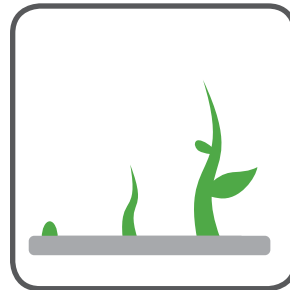
Massive over life cost
savings more cost effective
than grating or grid
structures for elevated
paving installations



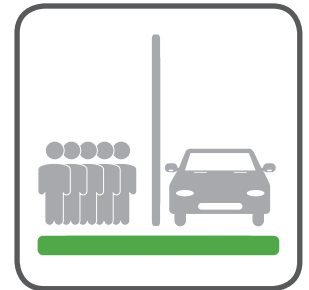
Resistant to salt corrosion.



Resistant to attack from mould, moss and verdigris treatments.



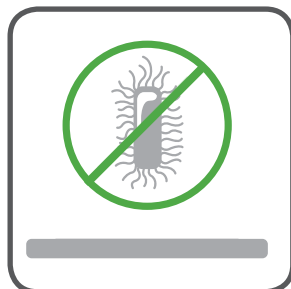
Resistant to efflorescence and other marks.



Durable: resistant to heavy vehicle and pedestrian traffic.



Frost-proof.



Hypoallergenic. No VOC.



Easy to sterilize.



Eco-friendly maintenance.



Easy to clean.



Recyclable and ecological.



New solution in extra-thick porcelain stoneware for outdoor trilling. 2 cm thick, colored fine porcelain stoneware slabs obtained from atomizing high-class clays, quartzes and metal oxides pressed at 400 kg/cm², completely sintered at a temperature of 1200°C and then squared using a system of abrasive grinders.



NEW YORK | NEW JERSEY | MIAMI

**The marketing name for this product is property of COBA-USA.
This same product may be marketed under different names.**