

Cement

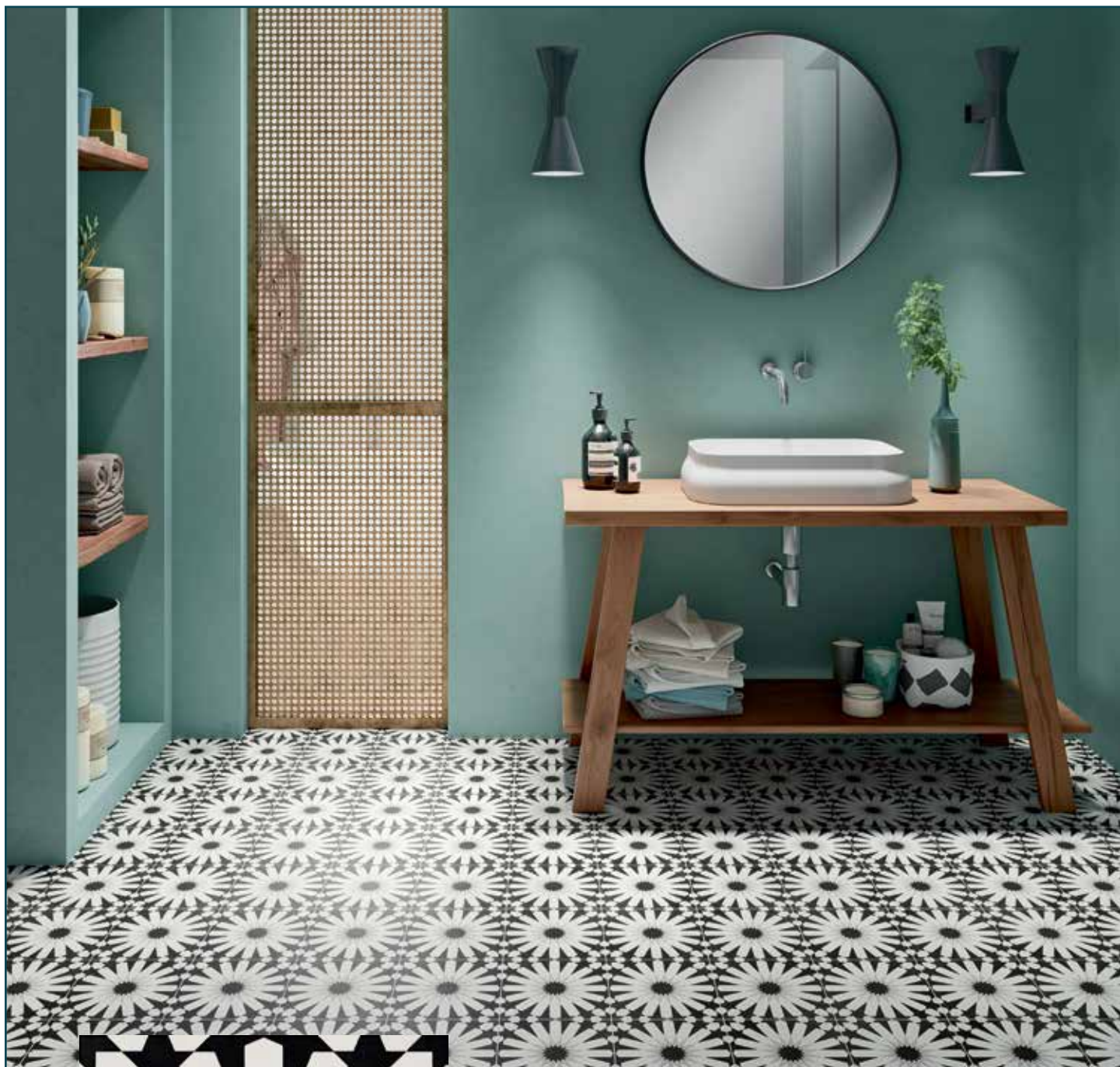
8x8 deco porcelain collection



COBSA-USA

NEW YORK | NEW JERSEY | MIAMI

Etna Aster BLACK



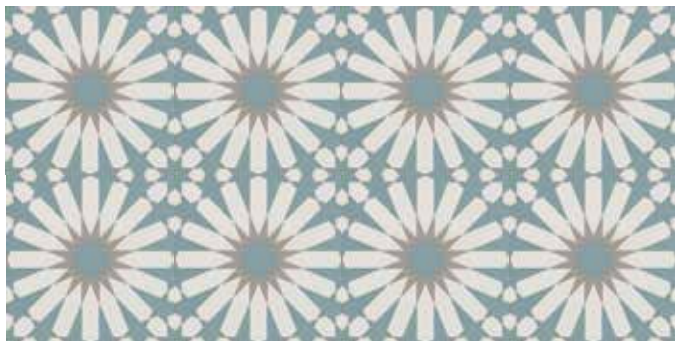
CEPEABKD1A2



Etna Aster BLUE



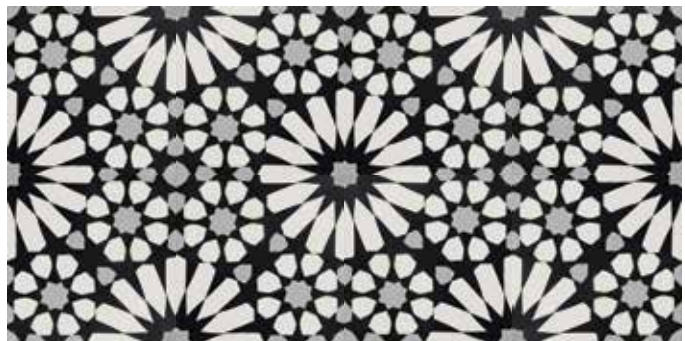
CEPEABLD1A1



Etna Big Aster BLACK



CEPEBBKD1B2



Etna Big Aster BLUE



CEPEBBLD1B1



Etna Cosmos BLACK



CEPECBKD1C1



Geometric BLACK



CEPGEBKD2B1



Geometric BLUE



CEPGEBLD2A1

Geometric TAUPE



CEPGETAD2C1



Originale Bali BLACK+WHITE



CEPOBBWD3B1



Originale Bali BLUE



CEPOBBLD3B2



Originale Nordic GREEN



CEPONGND4A1



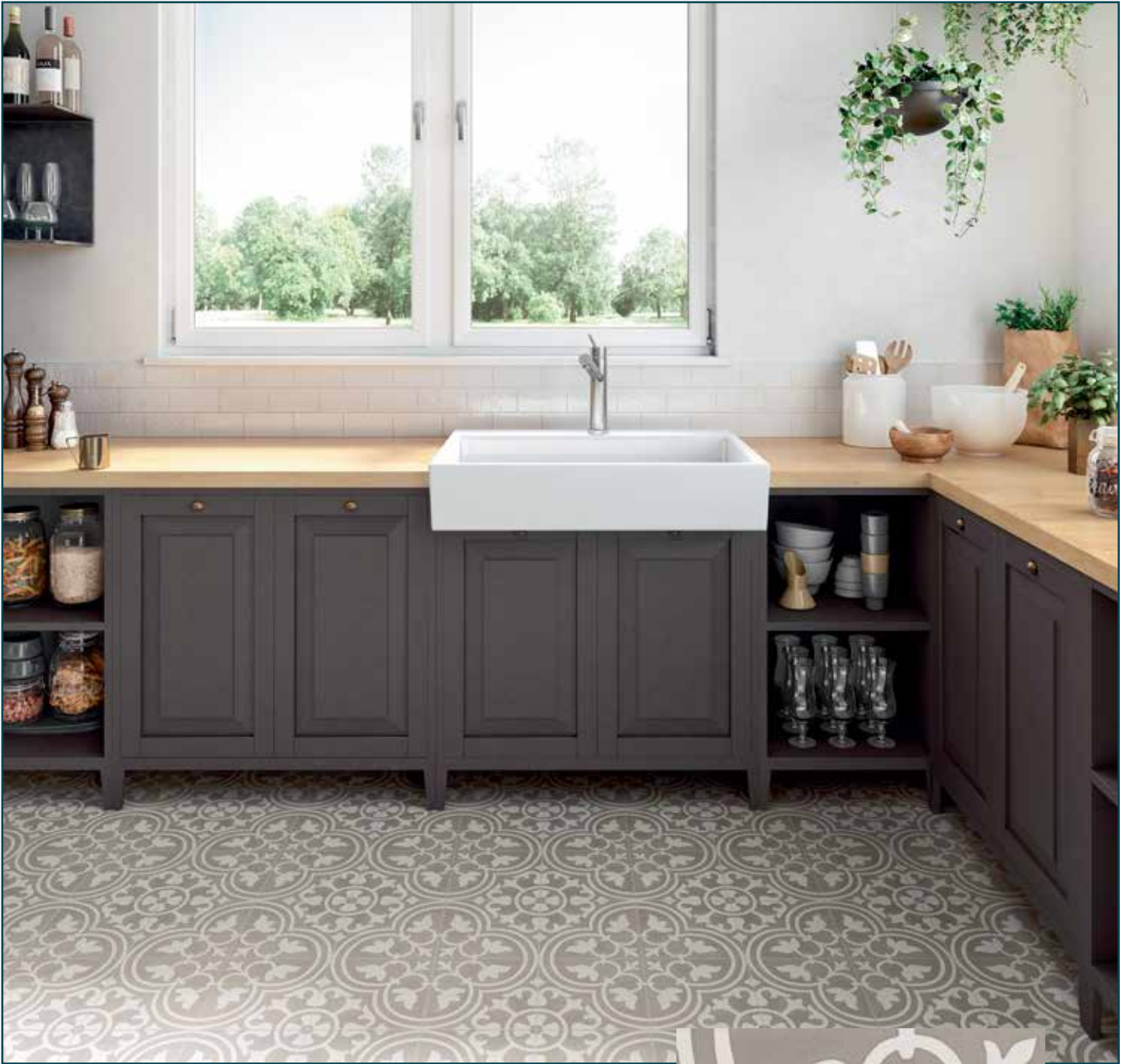
Originale Clover GREY



CEPOCGRD3C1



Originale Clover TAUPE



CEPOCTAD3C4



Originale Deco GREY



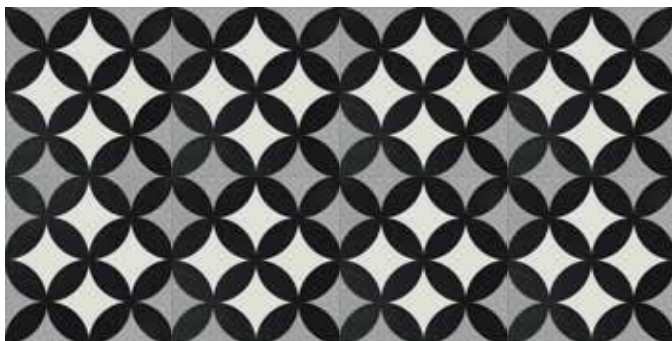
CEPODGRD3D1



Originale Deco TAUPE



CEPODTAD3D3



Suggested Applications

Floor Wall Residential Light Commercial Heavy Commercial Exterior Pools

*Wear can vary greatly, please consult with a professional.

Installation Suggestions

Plank Installation* Modular Setting Joint Size 1/8"

*Install the offset the width of the plank. For professional installation, the use of leveling spacers for all plank and rectangular (ie. 12x24) format tiles is recommended.

EDGE: Straight/Pressed Rustic Rectified

FINISH: Matte Polished Structured Honed Semi-Polished _____

Porcelain Type

through-body color-bodied glazed unglazed double-loaded other _____

Shade Variation

V1 Uniform Appearance V2 Slight Variation V3 Moderate Variation V4 Substantial Variation

THICKNESS: **10mm** # OF FACES: **8**

Slip Resistance

DCOF	Values	Applications
<input checked="" type="checkbox"/> .68	0.42	Recommended Standard DCOF value for wet/dry commercial flooring
	0.65	Recommended Standard DCOF value for ADA ramps

ASTM C-1028
 ANSI A137.1
 DIN 51097/51130

DIN 51130 *R9: Industry Standard/ADA Requirements **R11: Recommended For Exteriors

R9* (3-10°) R10 (10-19°) R11** (19-27°)
 R12 (27-35°) R13 (>35°)

DIN 51097

Class	Typical Applications	Critical Angle
<input checked="" type="checkbox"/> A	Barefoot, but mainly dry aisles and walkways, dry changing areas	≥12°
<input type="checkbox"/> B	Shower rooms, pool surrounds, wet changing areas, disinfectant spray areas (plus all Class A areas)	≥18°
<input type="checkbox"/> C	Areas constantly under water, e.g. steps into pools, foot baths, included pool surrounds, jacuzzis (plus all Class A&B areas)	≥24°

Scratch Resistance

MOH'S SCALE
 UNI EN ISO
 10545.6

6

MINERAL

1. Talc (Talc)	6. Microline (Glass, Glazed Tile)
2. Gypsum (Fingernail)	7. Quartz (Unglazed Porcelain)
3. Calcite (Penny)	8. Topaz (Granite)
4. Flourite (Some Marbles)	9. Corundum (Ruby)
5. Apatite (Knife Blade)	10. Diamond (Diamond)

Industry standard ≤175mm²

Wear Resistance

PEI RATING
 UNI EN ISO
 10545.7

- Class 1: Walls only
 - Class 2: Residential floors w/minimal abrasive traffic
 - Class 3: Residential interiors/light commercial traffic
 - Class 4: Medium commercial applications
 - Class 5: All commercial applications/heavy traffic
- *Wear can vary greatly, please consult with a professional.

Stain Resistance

ASTM C1378-04
 UNI EN ISO
 10545.14

4

- 5: Removed after 5 minutes (hot water running)
- 4: Removed by manual cleaning (weak detergent)
- 3: Removed by mechanical cleaning (strong detergent)
- 2: Removed by immersion (24 hrs in suitable solvent)
- 1: Stain not removed

Water Absorption

ASTM C-373
 UNI EN ISO
 10545.3

<input checked="" type="checkbox"/>	Absorbs 0-.5%	<input type="checkbox"/>	Absorbs .5-3%	<input type="checkbox"/>	Absorbs 3-7%	<input type="checkbox"/>	Absorbs 7% +
	Impervious Interior/Exterior Frost Resistant		Vitreous Interior/Exterior Frost Resistant		Semi-Vitreous Indoor Use Only		Non-Vitreous Indoor Use Only

Breaking Strength

ASTM C648
 UNI EN ISO
 10545.4

>38 n/mm²

Industry standard should be greater than
 250 lbs
 or
 50 N/MM²

Facial Dimension

ASTM c499-09
 UNI EN ISO
 10545.02

	Standard	Tolerance	Result
flatness	±5mm	±.5%	PASS
thickness	±6mm	±.5%	PASS
straightness	±4.5mm	±.5%	PASS
squareness	±5.4mm	±.6%	PASS
sides L/W	±1.1mm ±4.5mm	±.5%	PASS

Chemical Resistance

ASTM C650
 UNI EN ISO
 10545.13



Allowances for:

	result
Acid	PASS
Bases	PASS
Chemicals	PASS

Leed Information



REQUIREMENTS
 FOR COMMERCIAL
 INTERIORS/NEW
 CONSTRUCTION

Sustainable Sites	1 Point
Site selection	
SS CREDIT 1 Heat Island Effect-non roof Material with a solar reflectant index of at least 29.	<input type="checkbox"/>
Energy & Atmosphere	1 Point
EA CREDIT 4 Green Power: Products that optimize energy performance for floors and walls using thermal conductivity. BTU-FT	<input type="checkbox"/>
Indoor Environmental Quality Low-Emitting Materials-Flooring Systems	1 Point
IEQ CREDIT 3.1-7 Green Cleaning: Reducing occupants exposure to hazardous cleaning chemicals.	<input type="checkbox"/>
IEQ CREDIT 4.1 Low Emitting Adhesives: Products less than 65 G/L VOC	<input type="checkbox"/>
IEQ CREDIT 4.3 Low Emitting Materials: Flooring systems.	<input type="checkbox"/>

Materials & Resources	1 Point	2 Points
M&R CREDIT 2 Construction Waste Management: Recycling salvaged construction waste in to new reusable materials.	50% <input type="checkbox"/>	70% <input type="checkbox"/>
M&R CREDIT 4.1-4.2 Recycled Content: The sum of post consumer plus 1/2 of the pre consumer reps at least 10-20% of total value of materials.	10% <input type="checkbox"/>	20% <input type="checkbox"/>
M&R CREDIT 5 Regional Materials: Materials manufactured within 500 miles of the project site.	10% <input type="checkbox"/>	20% <input type="checkbox"/>
Innovation in Design	1-5 Points	
ID CREDIT 1 Innovation in Design Measurable exemplary environmental performance.	<input type="checkbox"/>	

Type: **Porcelain Stoneware**

Product Line: **Cement**

The marketing name for this product is property of Cobsa-USA. This same product may be marketed under different names.