

# Apache

"wood-look" porcelain



GLACIER

**COBSA-USA**

NEW YORK | NEW JERSEY | MIAMI



DOMAPBA840





DOMAPFR840





WOOD-LOOK PORCELAIN

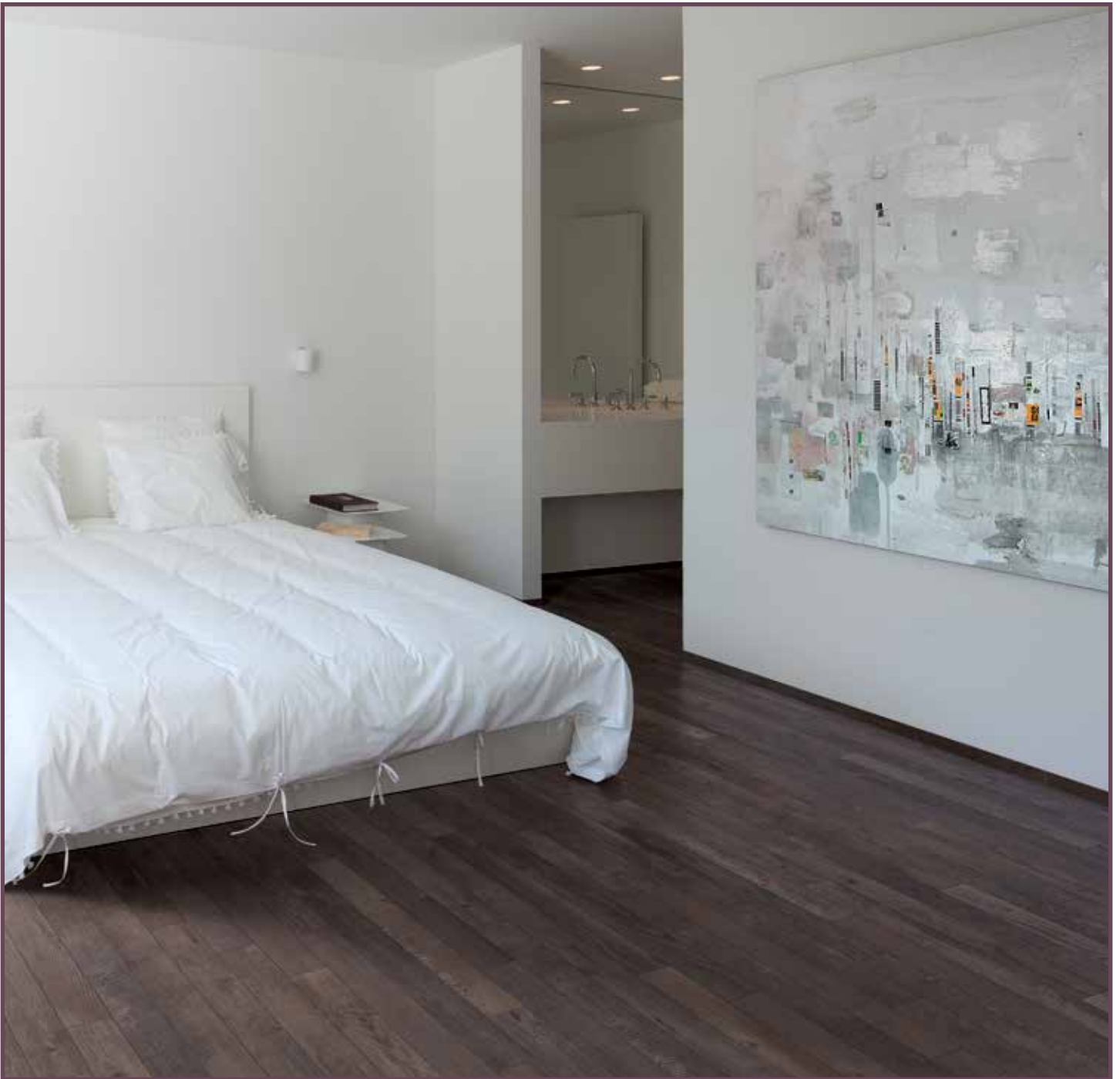
*Glacier*



DOMAPGL840



| 8 x 40 |



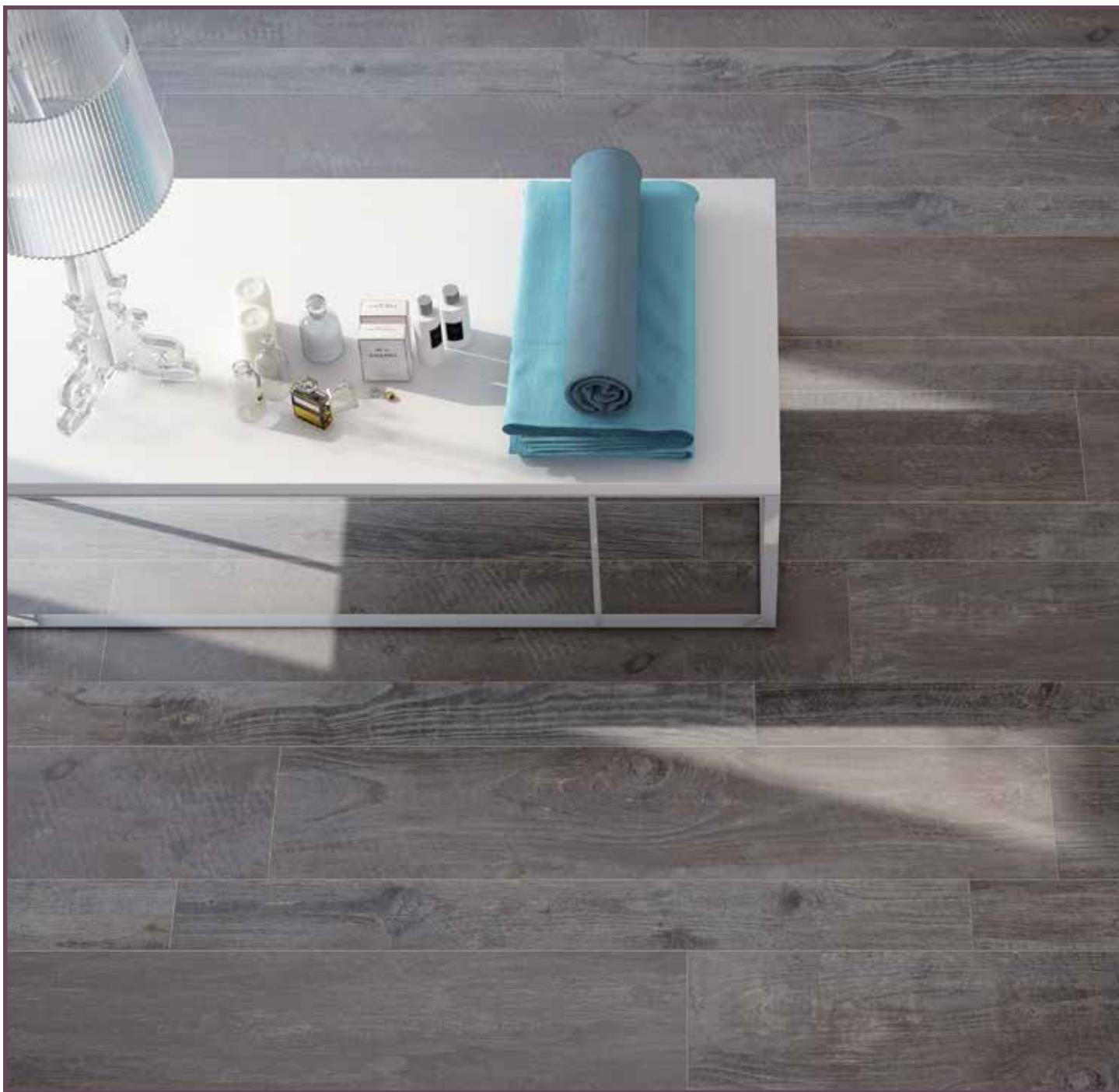
DOMAPLO840



| 8 x 40 |

WOOD-LOOK PORCELAIN

*Summit*



DOMAPSU840



| 8 x 40 |

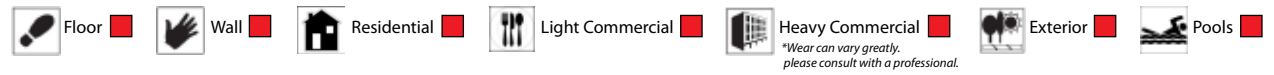




DOMAPTR840



# Suggested Applications



# Installation Suggestions

Plank Installation\*  Modular Setting  Joint Size

\*Install the offset the width of the plank. For professional installation, the use of leveling spacers for all plank and rectangular (ie. 12x24) format tiles is recommended.

EDGE: Straight/Pressed  Rustic  Rectified

FINISH: Matte  Polished  Structured   
 Honed  Semi-Polished

# Porcelain Type

through-body  color-bodied  glazed  unglazed  double-loaded  other \_\_\_\_\_

# Shade Variation

V1 Uniform Appearance  V2 Slight Variation  V3 Moderate Variation  V4 Substantial Variation

THICKNESS: 10mm # OF FACES: 60

# Slip Resistance

DCOF Values Applications

<input checked="" type="checkbox"/> .65	0.42	Recommended Standard DCOF value for wet/dry commercial flooring
<input type="checkbox"/>	0.65	Recommended Standard DCOF value for ADA ramps

ASTM C-1028  
ANSI A137.1  
DIN 51097/51130

DIN 51130 \*R9: Industry Standard/ADA Requirements \*\*R11: Recommended For Exteriors

R9\* (3-10°)  R10 (10-19°)  R11\*\* (19-27°)  
 R12 (27-35°)  R13 (>35°)

DIN 51097

Class	Typical Applications	Critical Angle
<input checked="" type="checkbox"/> A	Barefoot, but mainly dry aisles and walkways, dry changing areas	≥12°
<input checked="" type="checkbox"/> B	Shower rooms, pool surrounds, wet changing areas, disinfectant spray areas (plus all Class A areas)	≥18°
<input type="checkbox"/> C	Areas constantly under water, e.g. steps into pools, foot baths, included pool surrounds, jacuzzis (plus all Class A&B areas)	≥24°

# Scratch Resistance

MINERAL

1. Talc (Talc)	6. Microline (Glass, Glazed Tile)
2. Gypsum (Fingernail)	7. Quartz (Unglazed Porcelain)
3. Calcite (Penny)	8. Topaz (Granite)
4. Flourite (Some Marbles)	9. Corundum (Ruby)
5. Apatite (Knife Blade)	10. Diamond (Diamond)

Industry standard ≤175mm<sup>2</sup>

MOH'S SCALE  
UNI EN ISO 10545.6

Wear Resistance  
PEI RATING  
UNI EN ISO 10545.7

- Class 1: Walls only
- Class 2: Residential floors w/minimal abrasive traffic
- Class 3: Residential interiors/light commercial traffic
- Class 4: Medium commercial applications
- Class 5: All commercial applications/heavy traffic

\*Wear can vary greatly. please consult with a professional.

# Stain Resistance

5: Removed after 5 minutes (hot water running)  
 4: Removed by manual cleaning (weak detergent)  
 3: Removed by mechanical cleaning (strong detergent)  
 2: Removed by immersion (24 hrs in suitable solvent)  
 1: Stain not removed

ASTM C1378-04  
UNI EN ISO 10545.14

Water Absorption  
ASTM C-373  
UNI EN ISO 10545.3

<input checked="" type="checkbox"/> Absorbs 0-.5%	<input type="checkbox"/> Absorbs .5-3%	<input type="checkbox"/> Absorbs 3-7%	<input type="checkbox"/> Absorbs 7% +
Impervious Interior/Exterior Frost Resistant	Vitreous Interior/Exterior Frost Resistant	Semi-Vitreous Indoor Use Only	Non-Vitreous Indoor Use Only

# Breaking Strength

Industry standard should be greater than 250 lbs or 50 N/MM<sup>2</sup>

ASTM C648  
UNI EN ISO 10545.4

PASS

Facial Dimension  
ASTM c499-09  
UNI EN ISO 10545.02

	Standard	Tolerance	Result
flatness	±5mm	±.5%	PASS
thickness	±6mm	±.5%	PASS
straightness	±4.5mm	±.5%	PASS
squareness	±5.4mm	±.6%	PASS
sides L/W	±1.1mm ±4.5mm	±.5%	PASS

Chemical Resistance  
ASTM C650  
UNI EN ISO 10545.13

Allowsances for:

Acid	result
Bases	PASS
Chemicals	PASS

# Leed Information

REQUIREMENTS FOR COMMERCIAL INTERIORS/NEW CONSTRUCTION

Category	Requirement	1 Point	2 Points
Sustainable Sites	Site selection	1 Point	
	SS CREDIT 1 Heat Island Effect-non roof Material with a solar reflectant index of at least 29.	<input type="checkbox"/>	
Energy & Atmosphere	EA CREDIT 4 Green Power: Products that optimize energy performance for floors and walls using thermal conductivity. BTU-FT	<input type="checkbox"/>	
	Indoor Environmental Quality Low-Emitting Materials-Flooring Systems	1 Point	
Materials & Resources	M&R CREDIT 2 Construction Waste Management: Recycling salvaged construction waste in to new reusable materials.	50% <input type="checkbox"/>	70% <input type="checkbox"/>
	M&R CREDIT 4.1-4.2 Recycled Content: The sum of post consumer plus 1/2 of the pre consumer reps at least 10-20% of total value of materials.	10% <input type="checkbox"/>	20% <input checked="" type="checkbox"/>
	M&R CREDIT 5 Regional Materials: Materials manufactured within 500 miles of the project site.	10% <input type="checkbox"/>	20% <input type="checkbox"/>
Innovation in Design	IEQ CREDIT 3.1-7 Green Cleaning: Reducing occupants exposure to hazardous cleaning chemicals.	<input type="checkbox"/>	
	IEQ CREDIT 4.1 Low Emitting Adhesives: Products less than 65 G/L VOC	<input type="checkbox"/>	
	IEQ CREDIT 4.3 Low Emitting Materials: Flooring systems.	<input type="checkbox"/>	
Innovation in Design	ID CREDIT 1 Innovation in Design Measurable exemplary environmental performance.		1-5 Points <input type="checkbox"/>

Type: **Porcelain Stoneware**

Product Line: **Apache**

\*The marketing name for this product is property of CobsA-USA. This same product may be marketed under different names.\*